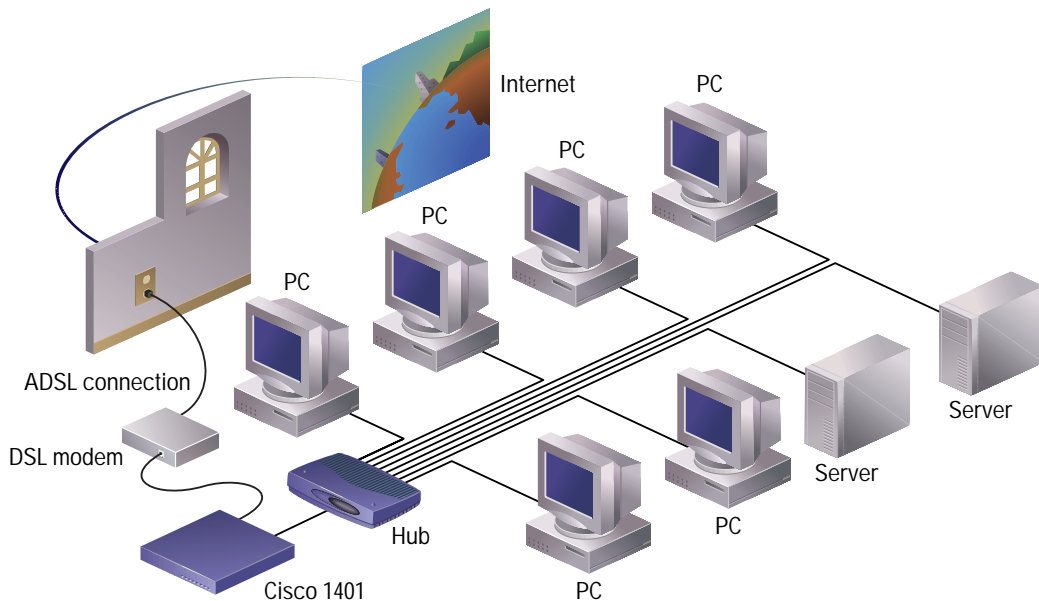


Quick Start Guide

INSTALLING YOUR CISCO 1401 ROUTER



1

UNPACK THE BOX

2

INSTALL THE ROUTER

3

VERIFY YOUR INSTALLATION



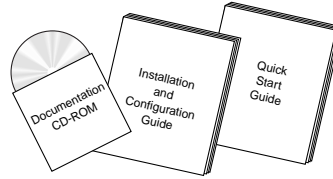
1

Unpack the Box

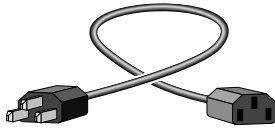
When you unpack the box that contains your Cisco 1401 router, you should find the items shown below.



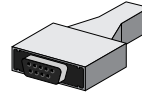
Cisco 1401 router



Product documentation



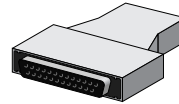
Power cord (black)



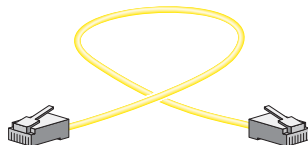
DB-9 to RJ-45 console adapter (light gray)



Console cable (light blue, RJ-45 to RJ-45)



DB-25 to RJ-45 console adapter (light gray)



Console cable (yellow, RJ-45 to RJ-45)



ATM 25 cable (light green, RJ-45 to RJ-45)

Items You Must Provide:

You must provide the following items to completely install the router:

- 10BaseT Ethernet hub or switch to connect the router to the local network.
- ATM DSL modem to connect the router to the ADSL line.
- RJ-11-to-RJ-11 cable to connect the DSL modem to the ADSL line.

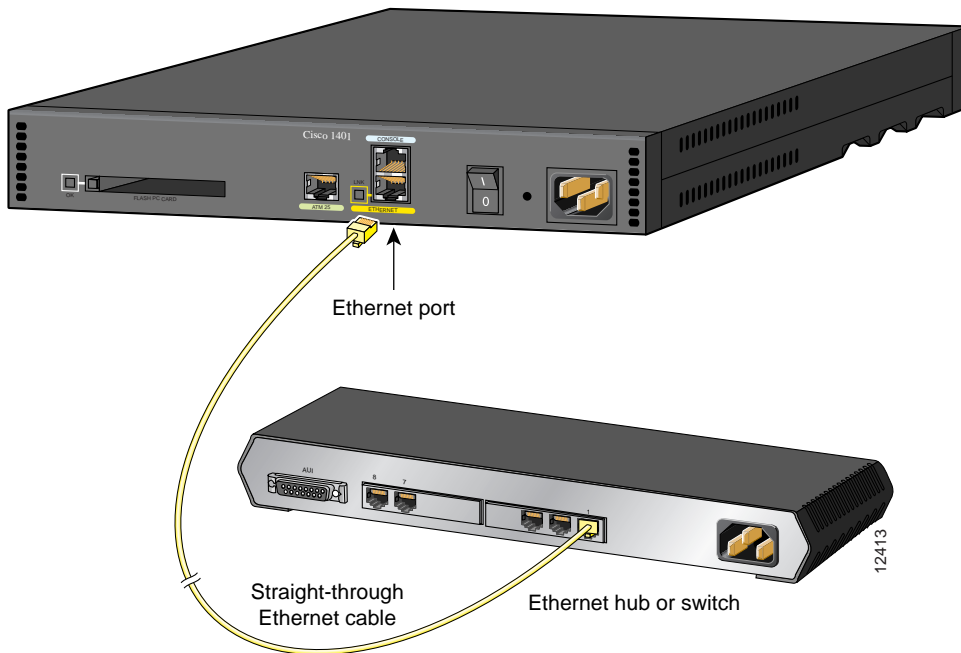
2 Install the Router

A. Connect the router to the local network

Use the included yellow Ethernet cable for connecting the router to the local Ethernet network. For more information on this cable, refer to the “Cabling Specifications” chapter in the hardware installation guide that came with the router.

Step 1 Connect one end of the yellow Ethernet cable to the yellow ETHERNET port.

Step 2 Connect the other end to a port on the Ethernet hub or switch.



2

Install the Router (continued)

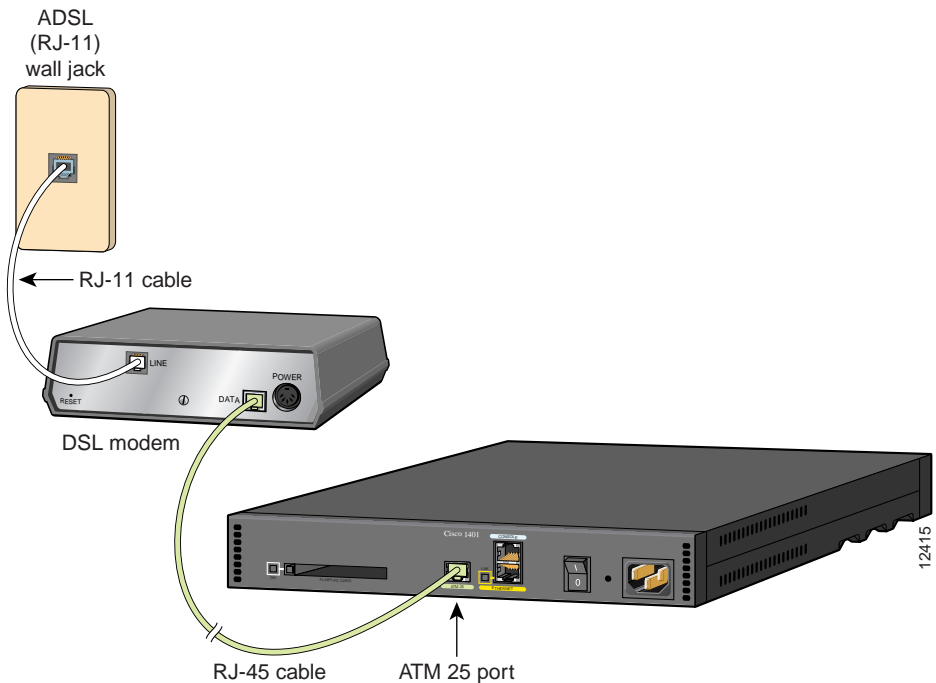
B. Connect the router to the ADSL line

You must provide an ATM DSL modem (for example, a Cisco 625 or Cisco 626 CAP modem), a crossover RJ-45-to-RJ-45 cable, and an RJ-11-to-RJ11 cable for this connection.

- Step 1** Connect one end of the RJ-45 cable to the light-green ATM 25 port on the router.
- Step 2** Connect the other end of the RJ-45 cable to the appropriate port on the CAP modem. For the Cisco 625 and Cisco 626, this is the DATA port.
- Step 3** Connect one end of the RJ-11 cable to the ADSL port on the CAP modem. For the Cisco 625 and Cisco 626, this is the LINE port.

Note: Refer to the documentation that came with the modem if you are not sure which modem port connects to the router and which port connects to the ADSL line.

- Step 4** Connect the other end of the RJ-11 cable to the ADSL wall jack.



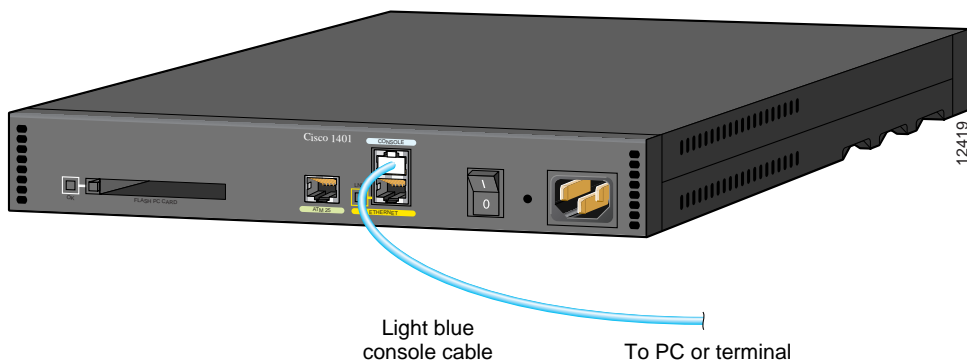
2 Install the Router (continued)

C. Connect a PC to the router

To use Cisco IOS software to configure the router, it must be connected to a terminal or to a PC with terminal-emulation software. Terminal emulation software should be configured with the following settings: 9600 baud, 8 data bits, no parity bits, and 1 stop bit.

Take the following steps to connect the router to one of these devices:

- Step 1** Connect one end of the light-blue console cable (included) to the CONSOLE port on the router rear panel.
- Step 2** Depending on the console port connector (DB-25 or DB-9) on your terminal or PC, connect one of the gray adapters (included) to the other end of the console cable.
- Step 3** Connect the gray adapter to the DB-25 or DB-9 connector on your terminal or PC.

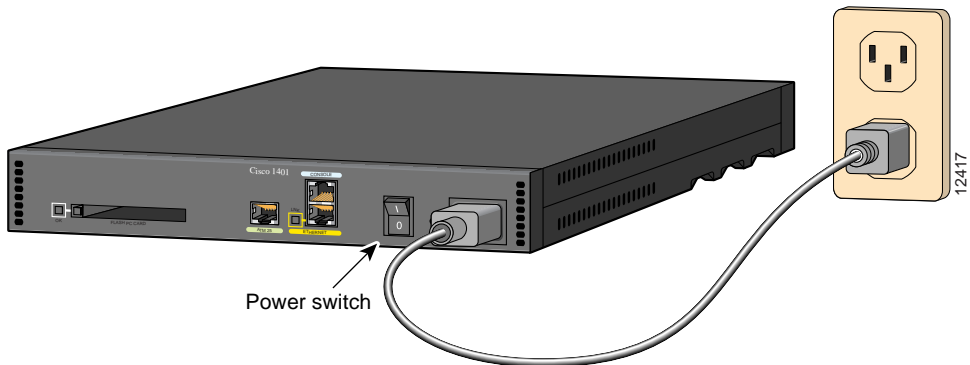


2

Install the Router (continued)

D. Connect the power cord

- Step 1** Connect the power-supply cord to the power socket (labeled +5,+12,-12 VDC) on the rear panel.
- Step 2** Connect the other end of the cord to a power outlet.
- Step 3** Turn on the router by pressing the power switch to the ON (|) position.
- Step 4** Confirm that the router has power by checking that the PWR LED on the front panel is on.



3

Verify Your Installation

After the router is powered on, the following LEDs confirm that you have correctly installed your router.

LED	Location	What to Look for
PWR	Front	On when power is being supplied to the router.
OK	Front	<ul style="list-style-type: none">• One blink per second when the router is in ROM monitor mode.• Several blinks per second when the router is running the boot image in ROM monitor.• On steady when the Cisco IOS software is loaded and functional.
LNK	Rear	On when the router is correctly connected to the local Ethernet network through the ETHERNET port.
WAN CARRIER	Front	On when the router has synchronized with the ADSL switch.
ETHERNET ACT	Front	Blinking when there is network traffic on the local Ethernet LAN.
OK	Rear	On when the Flash PC card is correctly installed in the router. If this LED is off, refer to the installation and configuration guide that came with your router for instructions on how to reinstall the Flash PC card.

For More Information

For more information about installing or configuring your Cisco 1401 router, refer to the following sources:

- *Cisco 1401 Router Installation and Configuration Guide* (in the accessory kit).
- The Cisco Connection Online card (in the accessory kit), which lists telephone numbers, e-mail addresses, and World Wide Web URLs for getting information directly from Cisco Systems.



Corporate Headquarters
Cisco Systems, Inc.
170 West Tasman Drive
San Jose, CA 95134-1706
USA
<http://www.cisco.com>
Tel: 408 526-4000
800 553-NETS (6387)
Fax: 408 526-4100

European Headquarters
Cisco Systems Europe s.a.r.l.
Parc Evolic, Batiment L1/L2
16 Avenue du Quebec
Villebon, BP 706
91961 Courtaboeuf Cedex
France
<http://www-europe.cisco.com>
Tel: 33 1 6918 61 00
Fax: 33 1 6928 83 26

Americas
Headquarters
Cisco Systems, Inc.
170 West Tasman Drive
San Jose, CA 95134-1706
USA
<http://www.cisco.com>
Tel: 408 526-7660
Fax: 408 527-0883

Asia Headquarters
Nihon Cisco Systems K.K.
Fuji Building, 9th Floor
3-2-3 Marunouchi
Chiyoda-ku, Tokyo 100
Japan
<http://www.cisco.com>
Tel: 81 3 5219 6250
Fax: 81 3 5219 6001

Cisco Systems has more than 200 offices in the following countries. Addresses, phone numbers, and fax numbers are listed on the **Cisco Connection Online Web site at <http://www.cisco.com>.**

Argentina • Australia • Austria • Belgium • Brazil • Canada • Chile • China (PRC) • Colombia • Costa Rica • Czech Republic • Denmark
England • France • Germany • Greece • Hungary • India • Indonesia • Ireland • Israel • Italy • Japan • Korea • Luxembourg • Malaysia
Mexico • The Netherlands • New Zealand • Norway • Peru • Philippines • Poland • Portugal • Russia • Saudi Arabia • Scotland • Singapore
South Africa • Spain • Sweden • Switzerland • Taiwan, ROC • Thailand • Turkey • United Arab Emirates • United States •

Copyright © 1998 Cisco Systems, Inc. All rights reserved. AccessPath, Any to Any, AtmDirector, the CCIE logo, CD-PAC, Centri, the Cisco Capital logo, *CiscoLink*, the Cisco Management Connection logo, the Cisco NetWorks logo, the Cisco Powered Network logo, the Cisco Press logo, the Cisco Technologies logo, ClickStart, ControlStream, DAGAZ, Fast Step, FireRunner, IGX, IOS, JumpStart, Kernel Proxy, LoopRunner, MGX, Natural Network Viewer, NetRanger, NetSonar, *Packet*, PIX, Point and Click Internetworking, Policy Builder, RouteStream, Secure Script, SMARTnet, SpeedRunner, Stratm, StreamView, *The Cell*, TrafficDirector, TransPath, VirtualStream, VlanDirector, Workgroup Director, and Workgroup Stack are trademarks; Changing the Way We Work, Live, Play, and Learn, Empowering the Internet Generation, The Internet Economy, and The New Internet Economy are service marks; and BPX, Catalyst, Cisco, Cisco IOS, the Cisco IOS logo, Cisco Systems, the Cisco Systems logo, EnterpriseSolver, EtherChannel, FastHub, ForeSight, FragmentFree, IP/TV, IPX, LightStream, MICA, Phase/IP, StrataSphere, StrataView Plus, and SwitchProbe are registered trademarks of Cisco Systems, Inc. in the U.S. and certain other countries. All other trademarks mentioned in this document are the property of their respective owners. (9810R)



Printed in the USA on recycled paper containing 10% postconsumer waste.

DOC-785467-
78-5467-01