



Quick Installation Guide – CATALYST 2926 SERIES AND CATALYST 2926G SERIES

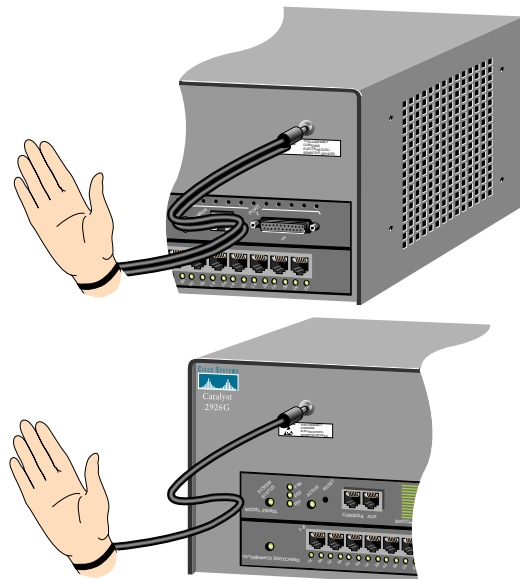
Note: This Quick Installation Guide is intended for experienced installers. For detailed hardware installation instructions, refer to the Catalyst 2926 Series and Catalyst 2926G Series Installation Guide.

1. Prepare for Installation
2. Rack-Mount the Switch
3. Connect the Switch to the Network
4. Connect the Power
5. Start the System

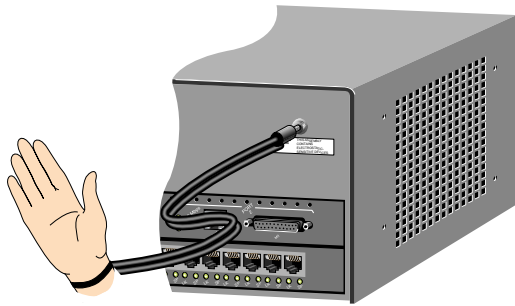


1. Prepare for Installation

- 1 Check the packing slip to ensure that all the proper components are present.
- 2 Ensure that the site is set up properly:
 - Prepare equipment racks
 - Ensure the environment is within specification
 - Prepare network connections
- 3 Obtain the following equipment:
 - ESD grounding strap
 - Numbers 1 and 2 Phillips screwdrivers
 - Tape measure and level
- 4 Ensure your safety when installing the Catalyst 2926 series or Catalyst 2926G series switch:
 - Lift the chassis safely
 - Cooperate with the natural laws of electricity
 - Ensure that the power service at your site is suitable for the chassis you are connecting
- 5 Take steps to prevent ESD damage to electronic components by using an ESD wrist strap (see figure)



2



3

3 2. Rack-Mount the Switch

To rack-mount the Catalyst 2926 series or Catalyst 2926G series switch:

- 1 Attach the L brackets to the chassis
- 2 Install the switch in the rack

Attach the L brackets to the chassis

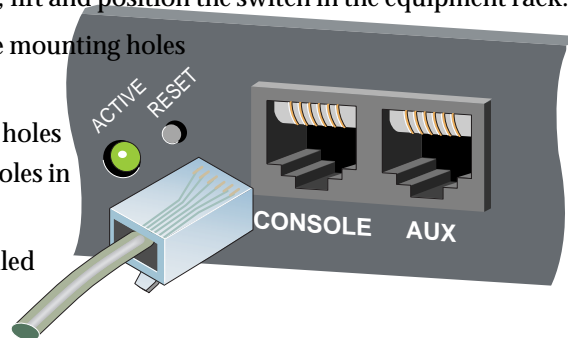
Note: Only the Catalyst 2926G series switch is shown. The installation procedures are the same for both the Catalyst 2926 series and Catalyst 2926G series switches.

Attach the L brackets to the chassis using the four Phillips-head screws provided in the rack-mount kit.

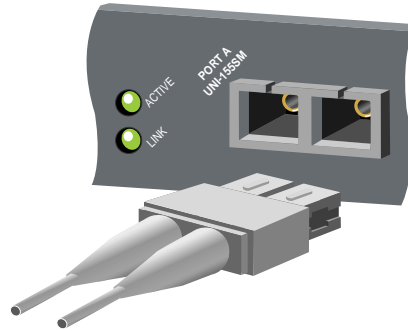
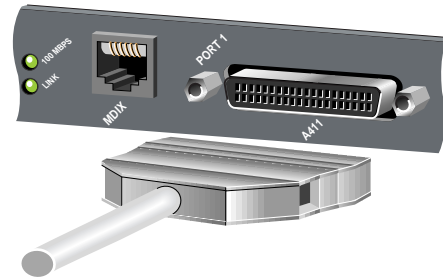
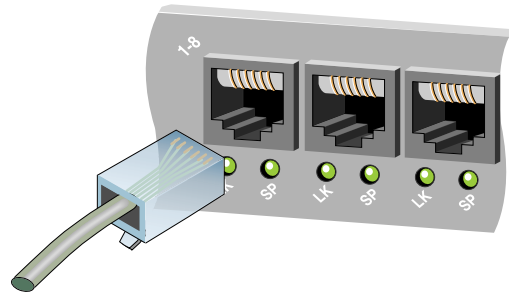


Install the switch in the rack

- 1 With a person on each side of the chassis, lift and position the switch in the equipment rack.
- 2 Align the holes in the L brackets with the mounting holes in the equipment rack.
- 3 Insert the mounting screws through the holes in the L brackets and into the threaded holes in the mounting post.
- 4 Use a level to ensure the chassis is installed straight and level.



3



4 3. Connect the Switch to the Network

To connect the Catalyst 2926 series or Catalyst 2926G series switch to the network:

- 1 Connect a terminal to the console port
- 2 Connect the switch ports to the network

Connect a terminal to the console port



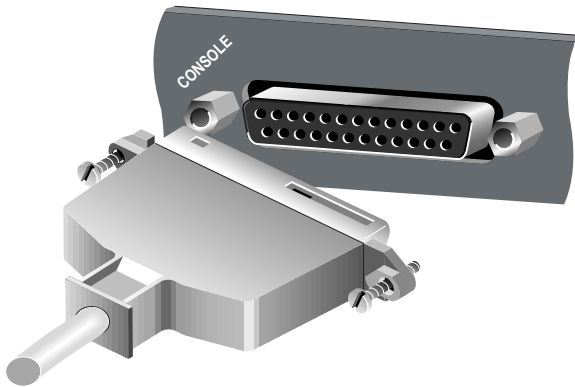
Caution To prevent ESD damage to electronic components, always use an ESD wrist strap when handling the switch.

- Catalyst 2926 Series Supervisor Engine
- Catalyst 2926G Series Supervisor Engine

Catalyst 2926 Series Supervisor Engine

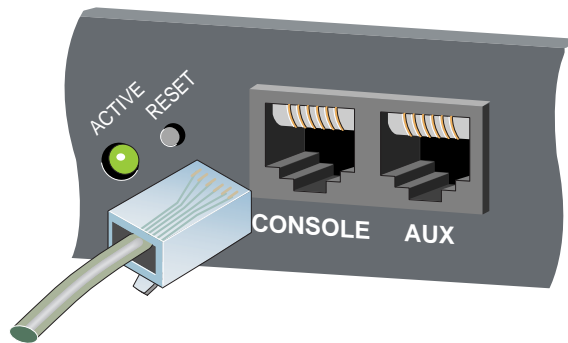
To connect a terminal to the Catalyst 2926 series supervisor engine console port, plug an EIA/TIA-232 (RS-232) DCE DB-25-to-DTE DB-25 straight-through cable into the console port.

5



Catalyst 2926G Series Supervisor Engine

To connect a terminal to the Catalyst 2926G series supervisor engine console port, plug an RJ-45-to-RJ-45 straight-through cable into the console port jack. Use an RJ-45-to-DB-25 or RJ-45-to-DB-9 adapter to connect to the terminal.



Connect the switch ports to the network

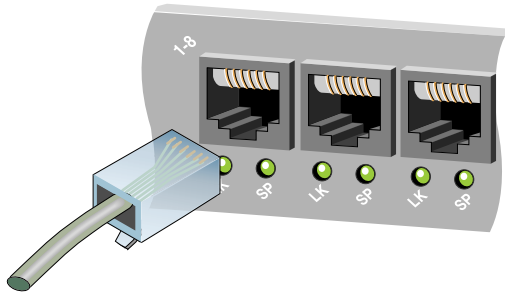
Note: If you are not sure which cable and connector to use for a particular switch port, refer to the Catalyst 2926 Series and Catalyst 2926G Series Installation Guide.

The Catalyst 2926 series and 2926G series modules use the following connection types:

- RJ-45
- Media-Independent Interface (MII)
- SC-Type Fiber Optic

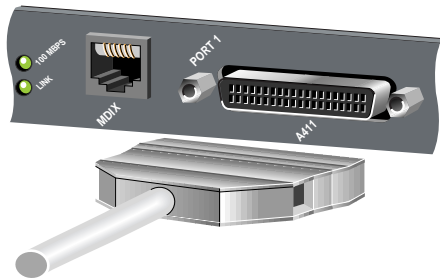
RJ-45

To connect switch ports with RJ-45 interfaces, use Category 5 UTP (100BaseTX, 10/100BaseTX) cables with male RJ-45 interfaces.



Media-Independent Interface (MII)

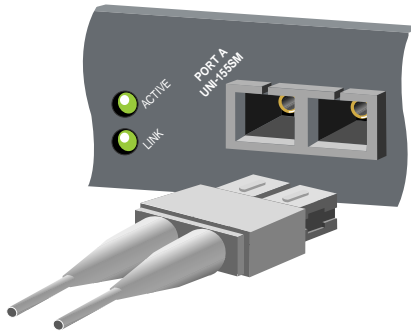
The Catalyst 2926 series supervisor engine has MII uplink ports in addition to RJ-45 ports. To connect to the MII interfaces, use Category 5 UTP cables with male MII connectors.




SC-Type Fiber Optic


To connect switch ports with SC-type fiber-optic interfaces, use multimode fiber-optic cable with male

SC-type connectors.

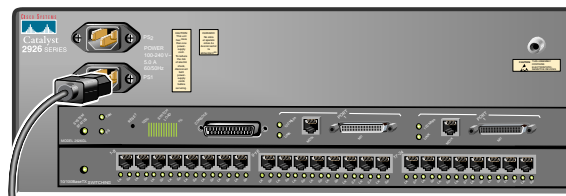


4. Connect the Power

 **Warning** Before you work on any equipment, be aware of the hazards involved with electrical circuitry and be familiar with standard practices for preventing accidents.

 **Caution** To prevent ESD damage to electronic components, always use an ESD wrist strap when handling the switch.

- 1 Attach each power cable to a grounded outlet. If possible, connect each cable to an outlet on a separate circuit. Make sure that the source power is within range.
- 2 Do not connect the power cables to the power supplies until you are ready to boot the switch.



Catalyst 2926 series



Catalyst 2926G series

5. Start the System

- 1 Before you start the system, verify the following:
 - All interface cable connections are secure.
 - Each power supply is connected to a grounded power source.
 - If both power supplies are being used, each power cord is connected to a different grounded outlet.
 - A terminal is connected to the supervisor engine console port and is turned on.
- 2 To power up the switch, plug the power cables into the power supplies. The switch begins the boot process.
- 3 During the boot process:
 - The PS LED (Catalyst 2926 series supervisor engine) or PS1 and PS2 LEDs (Catalyst 2926G series supervisor engine) should be green.
 - The Fan LED on the supervisor engine should be green and you should hear the system fans operating.
 - The System Status LED on the supervisor engine should be green after the boot is complete (it will flash red, orange, and green during startup).
 - The supervisor engine interface LEDs and switch port Link LEDs might blink or stay lit continuously during the boot process. Some LEDs do not come on until you configure the interfaces. Wait until the system boot is complete before attempting to verify the LED indications.
 - The console terminal displays a script and system banner.
 - When the boot process is complete, the supervisor engine begins to initialize the switch ports. Messages appear on the console as the ports come online.
- 4 Press **Return** at the Enter Password prompt to access the console command line.

Your installation is complete!

Now, refer to the *Catalyst 2926 Series and Catalyst 2926G Series Software Configuration Guide* to configure the switch.

**Corporate Headquarters**

Cisco Systems, Inc.
170 West Tasman Drive
San Jose, CA 95134-1706
USA
<http://www.cisco.com>
Tel: 408 526-4000
800 553-NETS (6387)
Fax: 408 526-4100

European Headquarters

Cisco Systems Europe s.a.r.l.
Parc Evolic, Batiment L1/L2
16 Avenue du Quebec
Villebon, BP 706
91961 Courtaboeuf Cedex
France
<http://www-europe.cisco.com>
Tel: 33 1 6918 61 00
Fax: 33 1 6928 83 26

**Americas
Headquarters**

Cisco Systems, Inc.
170 West Tasman Drive
San Jose, CA 95134-1706
USA
<http://www.cisco.com>
Tel: 408 526-7660
Fax: 408 527-0883

Asia Headquarters

Nihon Cisco Systems K.K.
Fuji Building, 9th Floor
3-2-3 Marunouchi
Chiyoda-ku, Tokyo 100
Japan
<http://www.cisco.com>
Tel: 81 3 5219 6250
Fax: 81 3 5219 6001

Cisco Systems has more than 200 offices in the following countries. Addresses, phone numbers, and fax numbers are listed on the Cisco Connection Online Web site at <http://www.cisco.com>.

Argentina • Australia • Austria • Belgium • Brazil • Canada • Chile • China • Colombia • Costa Rica • Croatia • Czech Republic • Denmark • Dubai, UAE
Finland • France • Germany • Greece • Hong Kong • Hungary • India • Indonesia • Ireland • Israel • Italy • Japan • Korea • Luxembourg • Malaysia
Mexico • The Netherlands • New Zealand • Norway • Peru • Philippines • Poland • Portugal • Puerto Rico • Romania • Russia • Saudi Arabia • Singapore
Slovakia • Slovenia • South Africa • Spain • Sweden • Switzerland • Taiwan • Thailand • Turkey • Ukraine • United Kingdom • United States •

Copyright © 1998 Cisco Systems, Inc. All rights reserved. AccessPath, Any to Any, AtmDirector, the CCIE logo, CD-PAC, Centri, the Cisco Capital logo, *CiscoLink*, the Cisco Management Connection logo, the Cisco NetWorks logo, the Cisco Powered Network logo, the Cisco Press logo, the Cisco Technologies logo, ClickStart, ControlStream, DAGAZ, Fast Step, FireRunner, IGX, IOS, JumpStart, Kernel Proxy, LoopRunner, MGX, Natural Network Viewer, NetRanger, NetSonar, *Packet*, PIX, Point and Click Internetworking, Policy Builder, RouteStream, Secure Script, SMARTnet, SpeedRunner, Stratm, StreamView, *The Cell*, TrafficDirector, TransPath, VirtualStream, VlanDirector, Workgroup Director, and Workgroup Stack are trademarks; Changing the Way We Work, Live, Play, and Learn, Empowering the Internet Generation, The Internet Economy, and The New Internet Economy are service marks; and BPX, Catalyst, Cisco, Cisco IOS, the Cisco IOS logo, Cisco Systems, the Cisco Systems logo, Enterprise/Solver, EtherChannel, FastHub, ForeSight, FragmentFree, IP/TV, IPX, LightStream, MICA, Phase/IP, StrataSphere, StrataView Plus, and SwitchProbe are registered trademarks of Cisco Systems, Inc. in the U.S. and certain other countries. All other trademarks mentioned in this document are the property of their respective owners. (9810R)



Printed in the USA on recycled paper containing 10% postconsumer waste.

78-5957-01