

Installing Network Data Collector

Before running the Network Data Collector Installation Wizard, make sure your workstation meets the hardware and software requirements described in the following section.

Workstation Requirements

The following are required and recommended workstation requirements for the Network Data Collector tool.

- IBM PC-compatible computer with 400 MHz Intel Pentium processor
- Color monitor with a suggested resolution of 1024x768. Lower resolutions will work.
- Microsoft Windows NT (4.0 or higher) with Service Pack 5
- Microsoft Windows 2000
- 256 MB RAM (minimum)
- Swap space equal to double the amount of RAM. For example, if your system has 256 MB of RAM, you'll need 512 MB of swap space.
- 1 GB hard drive space (minimum) where Network Data Collector is to be installed
- 200 MB hard drive space per Node
- 250 MB of free space on your systems /TEMP drive in order to temporarily decompress Network Data Collector files during installation.
- TCP/IP network connectivity to devices
- Netscape Navigator 4.0 (or higher), or Internet Explorer 5.0 (or higher)

- Java Plug In for Swing support or Java Runtime Environment (JRE) 2.1.2.2_006. If neither of these are on your system, you will be prompted to install it. JRE is bundled with Network Data Collector.
- ODBC driver version 3.510.3711.0 or above. If you have a lower version, you'll be prompted to install a newer version. ODBC is bundled with Network Data Collector.
- An NTFS file system is recommended
- Using Active Desktop is not recommended

Running the Network Data Collector Wizard

The installation process is straight forward with very little user intervention required. The entire process takes approximately 30 minutes. To install the Network Data Collector tool, complete the following steps:

- Step 1** Double-click on the **net_collecto_xx_yyyr.exe** file (**xx**= version, **yyy**= build) to uncompress all of the Network Data Collector files into your c:/temp directory. Once done, The Network Data Collector Installation Wizard will automatically launch and a Net Collector “Welcome” screen will appear.

Note If installing Network Data Collector from a CD, the “Welcome” screen should automatically appear once the CD is inserted.

- Step 2** Click **Next**.
- Step 3** A dialog box appears prompting you to enter the authentication key you obtained when ordering Network Data Collector. Enter the key and click **Next**.
- Step 4** When prompted, select **Custom** or **Default** installation. **Default** installation will install Network Data Collector into the following directory: c:\Program Files\CSCOpX. Choose **Custom** installation to select a different directory.
- Step 5** Installation Wizard will then confirm the the following:
- (a) Selected Components
 - Common Management Foundation 1.1

- CD Two 3.1
- Network Data Collector
- (b) Target Directory
 - c:\Program Files\CSCOpX (or user selected if Default installation)
- (c) Program Folder
 - Network Data Collector

- Step 6** Installation Wizard then checks for required components on your workstation.
- Step 7** Click **OK** when prompted.
- Step 8** Installation Wizard then verifies that there is enough disk space on your workstation. If it determines there is enough, the required files are installed into the directory chosen in step 2.
- Step 9** One installation is done, you will be prompted to restart your computer. Click **OK** to restart.

Note If any errors were detected, required components not found, or not enough hard disk located during installation, installation will stop and the Installation Wizard will display the reason. You will need to resolve the problem and then run Installation Wizard again.

Configuring Your Web Browser

Before launching Network Data Collector for the first time, you'll need to set up your browser as shown below.

Note Make sure that the browser you are using is either Netscape 4.0 (or higher) or Internet Explorer 5.0 (or higher).

- Enable Java and JavaScript.
 - (a) For Netscape Navigator, select **Edit > Preferences > Advanced**. Select the **Enable Java** and **Enable JavaScript** check boxes, then click **OK**.

- (b) For Microsoft Internet Explorer, select **Tools > Internet Options > Advanced**. Select the three checkboxes under the Java VM heading (**Java logging enabled, Java JIT compiler enabled, and Java console enabled**), then click **Apply**.
- Set your browser cache to at least 4 MB.
 - (a) For Netscape Navigator, select **Edit > Preferences > Advanced > Cache**. Set both the Memory Cache and the Disk Cache to at least 4096 KBytes, then click **OK**.
 - (b) For Microsoft Internet Explorer, select **Tools > Internet Options > General**, then click **Settings**. Set the cache size to at least 4 MB using the Amount of disk space to use slider bar, then click **OK**. Click **OK** to close the Internet Options dialog box.
- Configure your browser to accept all cookies.
 - (a) For Netscape Navigator, select **Edit > Preferences > Advanced**. Select the **Accept all cookies** radio button, then click **OK**.
 - (b) For Microsoft Internet Explorer, select **Tools > Internet Options > Advanced**. Double-click the **Security** icon to display the items it contains, if they are not already displayed. Double-click the **Cookies** icon to display the items it contains, if they are not already displayed. Select the **Always accept cookies** radio button, then click **OK**.
- Configure your browser to compare each page with its cached version every time it loads a page.
 - (a) For Netscape Navigator, select **Edit > Preferences > Advanced Cache**. Select the **Every Time** radio button, then click **OK**.
 - (b) For Microsoft Internet Explorer, select **Tools > Internet Options > General**, then click **Settings**. Select the **Every visit to the page** radio button, then click **OK**.

Launching Network Data Collector

After all browser settings have been set, you can launch the Network Data Collector tool by doing the following:

Step 1 Go to **Start > Programs > Network Data Collector** and click on **Start Network Data Collector**. A browser window displaying Network Data Collector will open.

Note An alternate way to launch Network Data Collector would be to direct your browser to the following URL: <http://install-machine:1741> (whereas *install-machine* is the name of the machine Network Data Collector was installed).

Step 2 Enter the username and password assigned to you.

Step 3 Click **Connect**.

The Network Data Collector drawer will be appear, displaying the eight Network Data Collector processes and an Advanced Settings folder.

Downloading the Java Plugin

Note If you plan on running Network Data Collector on the machine it is installed on, please skip this section. This section only applies to clients who will run Network Data Collector from a server.

If you do not have Java Runtime Environment 2, version 1.2 or later on your system, you will be prompted to download the latest version when you try to open one of the eight Network Data Collector processes for the first time. Click on **Get the Plugin** to go to Sun Microsystem's Java download page. What you do next depends on what browser you are using.

- **Netscape**

Some versions of Netscape will automatically take you to Sun Microsystem's Java download page without having to click **Get the Plugin**. Once on the download page, do the following:

Step 1 Select either the "US English" or "Internationalized" version of Java Runtime Environment version available (version 1.3.0_02 was available as of this writing).

Download Java 2 SDK, v 1.3.0_02 Software for Windows 95 / 98 / 2000 / NT / ME 4.0 (Intel Platform)

- One large bundle (~31MB)
- Multiple disk size pieces (each ~1.44MB or less) These pieces cannot be installed individually; you must download all of the pieces and follow the [installation instructions](#).

To find out more about this software, read:

[README](#) | [RELEASE NOTES](#) | [FEATURES](#) | [INSTALLATION](#) | [LICENSE](#)

Japanese localization of this software is included. For more information, see the [Japanese localization notes](#).

Step 2 Click **Continue**.

Step 3 Click **Accept**.

Step 4 Click on **FTP Download**.

If you have Netscape's "SmartDownload" activated, the Java Runtime Environment installation file will be downloaded to a pre-selected folder on your computer. If you do not have "SmartDownload" activated, you'll need to select a folder on your computer to download the file to.

Step 5 If you have Netscape's "SmartDownload" activated, the installation process will automatically start once the file has been downloaded to your computer. If you do not have "SmartDownload" activated, you'll need to go to the folder where you downloaded the file and click on Java Runtime Environment installation file begin the installation process.

Step 6 Follow all installation steps.

Step 7 Once Java 2 Runtime Environment has been installed, you can return to the Network Data Collector tool and re-select one of the eight processes.

- **Internet Explorer**

Some versions of Internet Explorer will receive a digital certificate from Sun Microsystems's Java site when attempting to go to their web page. It is mandatory that this certificate be accepted in order to proceed with the download.

Once on Sun's Java download page, follow the steps listed under **Netscape** above.

Uninstalling Network Data Collector

To uninstall Network Data Collector from your system, click on **Start > Programs > Network Data Collector > Uninstall Network Data Collector** and follow all instructions.

Network Data Collector cannot be uninstalled remotely. The uninstall program must be run on the computer Network Data Collector is installed.

Note Your computer does not need to be restarted after Network Data Collector has been uninstalled.

Process Requirements

The following processes must be running in Resource Manager Essentials (RME) for Network Data Collector to work correctly.

- NetcSchedulerServer
- IcServer
- EDS
- Essentials DbMonitor
- Essentials DbEngine

Launching Network Data Collector

- JrunProxyServer (Java)
- CMFDbEngine
- CMFDbMonitors
- DIServer

Verify the above processes are running by doing the following:

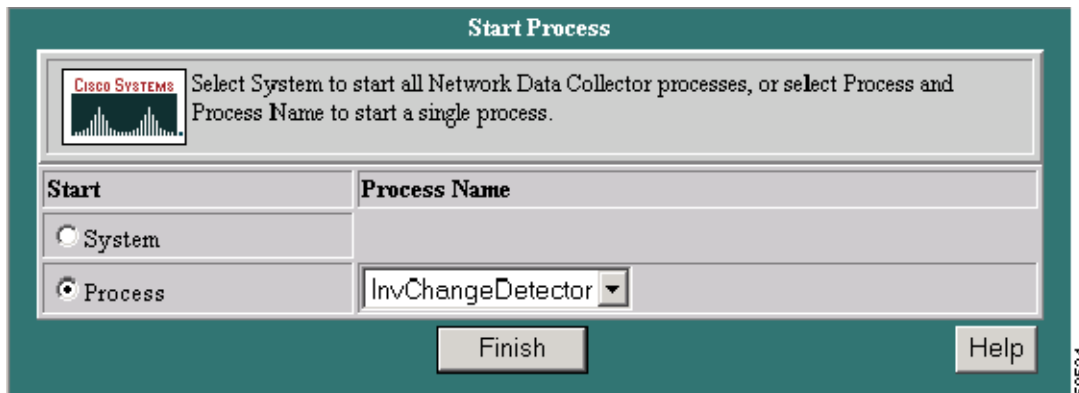
Step 1 Select **Process Management/Process Status** from the Advanced Settings folder in the Network Data Collector drawer.

Step 2 Locate the above processes on the Process Status page that appears.

Process Name	State	Pid	RC	Signo	Start Time	Stop Time	Core	Information
ChangeAudit	Program started - No mgt msgs received	194	0	0	04/26/01 09:32:48 AM	Not applicable	Not applicable	Server started by admin request

Step 3 Verify in the **State** column that all of the processes are running or have been started.

Step 4 If a process is not running, select **Process Management/Start Process** from the Advanced Settings folder in the Network Data Collector drawer.



- Step 5** Under Start, select **Process**.
- Step 6** Select the process from the **Process Name** pull-down menu.
- Step 7** Click **Finish**.

Switching Authentication Keys

To switch authentication keys, do the following:

- Step 1** Open a DOS prompt on the NT box.
- Step 2** Navigate to installation drive:\Program Files\CSCOPx
- Step 3** Type **replaceaudit** (the key for the new audit). Make sure to type the new key correctly (case sensitive) and there are no space between numbers. Be careful with 0 and o, 1 and I.

Security Permissions

It is possible that you may not want every user to see every page or do certain things in Network Data Collector. The system administrator can assign who will see and have access to what.

- To see the current security roles, go to the following page in the Advanced Settings folder:

Advanced Settings folder > Administration > User Administration > Permissions Report

- The system administrator can add new users by going to the following page in the Advanced Settings folder:

Advanced Settings folder > Administration > User Administration > Add Users

Add Users

CISCO SYSTEMS Add new users.

Users

guest

Roles

Help Desk
 Approver
 Network Operator
 Network Administrator
 System Administrator
 Export Data
 Developer

User Name

Local Password

Confirm Password

E-mail

CCO Login

CCO Password

Confirm Password

Proxy Login

Proxy Password

Confirm Password

Add **Clear**

Help

60222

- The system administrator can change the access level or delete an existing user by going to the following page in the Advanced Settings folder:

Advanced Settings folder > Administration > User Administration > Modify/Delete User

