



Limitations

Calling Name and Number Feature

- The Siemens Hicom 300 E PRI Interface with ETSI protocol does not support Calling Name Delivery Presentation feature.
- Cisco Unified CallManager 4.0 release does not support sending Connected Number information.
- When calling from Cisco 7960 IP phone to Siemens digital phone, the Siemens phone display Calling Number and trunk name after the call is answered. The Cisco IP phone displays the Connected Number.
- When calling from Siemens digital phone to Cisco 7960 IP phone, IP phone displays Calling Number after the call is answered. The Siemens phone however does NOT get updated when the call is answered. It displays the number being dialed and trunk name instead. It was verified that the Cisco Unified CallManager was not sending "Connected Number" information.

B-Channel Mapping

- Siemens Hicom 330E PBX uses Timeslot channel numbering (1-15, 17-31) when ETSI protocol is selected, therefore the Cisco 6608-E1 Gateway configuration for **Channel IE Type** field should be set to **Timeslot Number**.

System Components

Hardware Requirements

- Cisco Catalyst 6000 Series Switch, with Cisco 6608-E1 gateway
- Siemens Hicom 300E with DIU-N2
- Cisco Unified CallManager



Software Requirements

- Cisco Unified CallManager Release 4.0
- Siemens PBX software 3.1

Features

Key Features Supported

- Calling Number Identification Presentation

Key Features Not Supported

- Calling/Connected Name delivery is not supported by the Siemens Hicom 330E PRI Interface with ETSI protocol
- Sending Connected Number is not supported by Cisco Unified CallManager 4.0 PRI trunk

Configuration

Configuration Sequence and Tasks

1. Add the new access code to Dialing Plans using WABE + LDPLN.
2. Add the new trunk board using BCSU.
3. Configure Class of Trunk using COT.
4. Configure Class of Parameter for device handler using COP.
5. Configure Class of Service using COSSU.
6. Add the new trunk group access code using BUEND.
7. Configure trunk using TDCSU.
8. Configure Reference Clock using REFTA.
9. Configure trunk Least Cost Routing using LDAT + RICHT.
10. Configure LCR Out-dial Rules using LODR.

Configuration Menus and Commands

Configuring the Siemens 300E PBX

DPLN

```
<DISPLAY-WABE:TYPE=GEN;
DIS-WABE:GEN;
H500: AMO WABE STARTED
```

DIGIT INTERPRETATION		VALID FOR ALL DIAL PLANS			
CODE		CALL PROGRESS STATE	DIGIT ANALYSIS RESULT	RESERVED/CONVERT DNI/ADD-INFO	
		1 1111 11112 22		*=OWN NODE	
001 - 003	*		NETRTE		
004	*		NETRTE	R	
005 - 006	*		NETRTE		
1000	. **** *		STN	DESTNO 25	
				DNNO 0- 0- 25	
11 *		MBKY		
111	. **** *		TIE		
222	. **** *		OWNNODE		
3000	. **** *		STN	DESTNO 33	



4000 - 4050	. **** *	STN	DNNO 0- 0-333 DESTNO 111 DNNO 0- 0-111
-------------	--------------------	-----	--

DIGIT INTERPRETATION VALID FOR ALL DIAL PLANS

CODE	CALL PROGRESS STATE 1 1111 11112 22 0 12345 67890 12345 67890 12	DIGIT ANALYSIS RESULT	RESERVED/CONVERT
			DNI/ADD-INFO *=OWN NODE
4051 - 4599	. **** *	STN	R DESTNO 0 DNNO 0- 0-222*
4700 - 4999	. **** *	STN	R DESTNO 0 DNNO 0- 0-222*
5000 - 5009	. **** *	STN	DESTNO 55 DNNO 0- 0- 55
5010	. **** *	ATNDIND	R
5011 - 5020	. **** *	STN	DESTNO 55 DNNO 0- 0- 55
5021 - 5050	. **** *	STN	DESTNO 111 DNNO 0- 0-111
5051	. **** *	ATNDIND	

DIGIT INTERPRETATION VALID FOR ALL DIAL PLANS

CODE	CALL PROGRESS STATE 1 1111 11112 22 0 12345 67890 12345 67890 12	DIGIT ANALYSIS RESULT	RESERVED/CONVERT
			DNI/ADD-INFO *=OWN NODE
5500 - 5501	. **** *	STN	DESTNO 56 DNNO 0- 0-560
555	. **** *	TIE	
560	. **** *	TIE	
6000	. **** *	STN	DESTNO 33 DNNO 0- 0-333
7000 - 7002	. **** *	STN	DESTNO 56 DNNO 0- 0-560
79	. **** *	TIE	
8000 - 8019	. **** *	STN	DESTNO 0 DNNO 0- 0-222*

DIGIT INTERPRETATION VALID FOR ALL DIAL PLANS

CODE	CALL PROGRESS STATE 1 1111 11112 22 0 12345 67890 12345 67890 12	DIGIT ANALYSIS RESULT	RESERVED/CONVERT
			DNI/ADD-INFO *=OWN NODE
8020	. **** *	STN	R DESTNO 0 DNNO 0- 0-222*
854	. **** *	NETW	R DESTNO 2 DNNO 0- 0- 0
9	. **** *	TIE	
*66 *	SIGNON	
*91 *	MBOFF	
#66 *	SIGNOFF	
#91 *	MBON	
##22 *	DAKY	
##24 *	DSSKY	
##25 *	FWDKY	



##26 *	HTKY	
##27 *	KNOVRKY	
##28 *	MBKY	

DIGIT INTERPRETATION		VALID FOR ALL DIAL PLANS	
CODE	CALL PROGRESS STATE	DIGIT	RESERVED/CONVERT
	1 1111 1112 22	ANALYSIS	DNI/ADD-INFO
	0 12345 67890 12345 67890 12	RESULT	*=OWN NODE

##29 *	MSGRKY	
##35 *	TIMEKY	
##36 *	VCKY	
##37 *	VCRKY	
##38 *	CCKY	
##39 *	CONFKY	
##41 *	NAMEKY	
##42 *	PARKKY	
##43 *	REMKY	
##44 *	STKY	
##45 *	CBKKY	
##46 *	CONSKY	
##47 *	DNDKY	
##48 *	EXHOLDKY	
##49 *	HOLDKY	
##50 *	IUSEKY	
##51 *	LNRKY	

DIGIT INTERPRETATION		VALID FOR ALL DIAL PLANS	
CODE	CALL PROGRESS STATE	DIGIT	RESERVED/CONVERT
	1 1111 1112 22	ANALYSIS	DNI/ADD-INFO
	0 12345 67890 12345 67890 12	RESULT	*=OWN NODE

##52 *	PRIVKY	
##53 *	RLSKY	
##54 *	SNRKY	
##55 *	TRNSKY	
##56 *	RCTOFFKY	
##57 *	TOGGLEKY	

AMO-WABE -111 DIALLING PLANS, FEATURE ACCESS CODES
 DISPLAY COMPLETED;

Enbloc Sending Dial Plan, DPLN

```
<dis-richt:lrte,111;
DIS-RICT:LRTE,111;
H500: AMO RICHT STARTED
+-----+
| LRTE = 111   NAME = ROPT CCM           (NEUTRAL)  SRVC = ALL
| DNNO =      111   DESTNO = 111
| ROUTOPT = YES  REROUT = YES   PLB = NO         FWDBL = NO
| MFV: CNV=WITHOUT DSP=WITHOUT TEXT=          PULS=
| ROUTENO =    15  BUGS = LIN  ROUTATT = NO      MAINGRP = 15
| INFO =
+-----+
| TGRP = 38 LDAT PRI MWI                 (NEUTRAL)  SUBGROUP = 9
+-----+
```

Overlap Sending Dial Plan, DPLN

```
<DISPLAY-LDPLN:TYPE=LDP, LDPNO=43;
DISPLAY-LDPLN:TYPE=LDP, LDPNO=43;
H500: AMO LDPLN STARTED
```



```

+-----+-----+
| LDPNO : 43 | LDP : 38-X |
|             | SPC : 22   |
+-----+-----+
|           | DPLN | LRTE | LAUTH | DPLN | LRTE | LAUTH |
+-----+-----+
|           | 0    | 38   | 1     | 8    |     |     |
|           | 1    |     |     | 9    |     |     |
|           | 2    |     |     | 10   |     |     |
|           | 3    |     |     | 11   |     |     |
|           | 4    |     |     | 12   |     |     |
|           | 5    |     |     | 13   |     |     |
|           | 6    |     |     | 14   |     |     |
|           | 7    |     |     | 15   |     |     |
+-----+-----+

```

AMO-LDPLN-111 ADMINISTRATION LCR DIALPLAN
 DISPLAY COMPLETED;

PSTN Dial Plan, DPLN

DIS-LDPLN:LDP,34;
 H500: AMO LDPLN STARTED

```

+-----+-----+
| LDPNO : 34 | LDP : 9-1650-XXXXXXX |
|             | SPC : 22             |
+-----+-----+
|           | DPLN | LRTE | LAUTH | DPLN | LRTE | LAUTH |
+-----+-----+
|           | 0    | 916  | 1     | 8    |     |     |
|           | 1    |     |     | 9    |     |     |
|           | 2    |     |     | 10   |     |     |
|           | 3    |     |     | 11   |     |     |
|           | 4    |     |     | 12   |     |     |
|           | 5    |     |     | 13   |     |     |
|           | 6    |     |     | 14   |     |     |
|           | 7    |     |     | 15   |     |     |
+-----+-----+

```

AMO-LDPLN-111 ADMINISTRATION LCR DIALPLAN
 DISPLAY COMPLETED;

BCSU

<DISPLAY-BCSU:TYPE=TBL,LTG=1,LTU=1,SLOT=73;
 DISPLAY-BCSU:TYPE=TBL,LTG=1,LTU=1,SLOT=73;
 H500: AMO BCSU STARTED

ADDRESS : LTG 1 LTU 1

```

+-----+-----+-----+-----+-----+-----+-----+-----+
|  | ASSIGNED | MODULE | FCT | HWY | | INSERTED | | MODULE | | MODULE |
| PEN | MODULE   | TYPE   | ID  | BDL | | MODULE   | | STATE | | HW-INFO | | STATUS |
+-----+-----+-----+-----+-----+-----+-----+-----+
| 73 | Q2196-X  | DIU-N2 | 1  | A  | | Q2196-X  | | 1    | | -04 -  | | READY  |
+-----+-----+-----+-----+-----+-----+-----+-----+

```

AMO-BCSU -111 BOARD CONFIGURATION, SWITCHING UNIT
 DISPLAY COMPLETED;

Class of Trunk, COT

<dis-cot:4;
 DIS-COT:4;
 H500: AMO COT STARTED



```

COT: 4 INFO: 4:Q931 EXTERNAL
DEVICE: INDEP SOURCE: DB
PARAMETER:
  PRIORITY FOR AC WILL BE DETERMINED FROM MESSAGE
  RECALL IF USER HANGS UP IN CONSULTATION CALL
  TRUNK CALL TRANSFER
  TRUNK SIGNALING ANSWER
  CHANGEOVER FROM HOLD TO RING TONE
  KNOCKING OVERRIDE POSSIBLE
  CALL EXTEND FOR BUSY, RING OR CALL STATE
  NETWORKWIDE AUTOMATIC CALLBACK ON BUSY
  NETWORKWIDE AUTOMATIC CALLBACK ON FREE
  NETWORKWIDE CALL FORWARDING PERMITTED
  DON'T RELEASE CALL TO BUSY HUNT GROUP
  SEND NO NODE NUMBER TO PARTNER
  CONNECTION TO ROUTE OPTIMIZATION NODE
  INCOMING CIRCUIT FROM SYSTEM WITHOUT LCR
  TSC-SIGNALING FOR NETWORKWIDE FEATURES (MANDATORY)
  INCOMING CDR BY ZONE OR FROM LINE
  INCOMING CIRCUIT FROM SYSTEM WITHOUT LCR (DATA)
  INTERWORKING CALLBACK - NO ANSWER AND MAILBOX CALLBACK
  LINE WITH IMPLICIT NUMBERS
  CONTROLLED TRUNK AND LINE SELECTION
  NO TONE
  PRI
  RCL
  XFER
  ANS
  CHRT
  KNOR
  CEBC
  CBBN
  CBFN
  FWDN
  BSHT
  LWNC
  ROPT
  NLRC
  TSCS
  ICZL
  NLRD
  IWCB
  LINO
  CTLS
  NTON

```

```

AMO-COT -111 CLASS OF TRUNK FOR CALL PROCESSING
DISPLAY COMPLETED;

```

Class of Parameter for Device Handler, COP

```

<DISPLAY-COP:COPNO=4;
DISPLAY-COP:COPNO=4;
H500: AMO COP STARTED

```

```

COP: 4 INFO: 4:Q931
DEVICE: INDEP SOURCE: DB
PARAMETER:
  LINE WITH END-OF-DIAL
  SPECIAL MODE
  CODE CALLING RELEASE AFTER EVERY TASK
  REGISTRATION OF LAYER 3 ADVISORIES
  EOD
  SFRM
  CCR
  L3AR

```

```

AMO-COP -111 CLASS OF PARAMETER FOR DEVICE HANDLER
DISPLAY COMPLETED;

```

Class of Service, COSSU

```

<DISPLAY-COSSU:TYPE=COS,COS=32;
DISPLAY-COSSU:TYPE=COS,COS=32;
H500: AMO COSSU STARTED

```

COS	VOICE	FAX	TTX	VTX	DTE
32	>32:TRUNKS				
	TA	NOCO	NOCO	NOCO	TA
	TNOTCR	NOTIE	NOTIE	NOTIE	TNOTCR
					BASIC
					MSN
					CDRINT
					MULTRA

```

AMO-COSSU-111 CLASSES OF SERVICE, SWITCHING UNIT
DISPLAY COMPLETED;

```

```

<DISPLAY-COSSU:TYPE=LCOSV,LCOSV=32;
DISPLAY-COSSU:TYPE=LCOSV,LCOSV=32;
H500: AMO COSSU STARTED

```




```

BCGR      = 1          INS      = Y          LWPAR    = 2
LWPP      = 0          LWLT     = 0          LWPS     = 0
LWR1      = 0          LWR2     = 0
BCHAN     1 && 30

```

AMOUNT OF B-CHANNELS IN THIS DISPLAY-OUTPUT: 30

AMO-TDCSU-111 DIGITAL TRUNKS
 DISPLAY COMPLETED;

<DISPLAY-LWPAR:INFOPAT="2";
 DISPLAY-LWPAR:INFOPAT="2";
 H500: AMO LWPAR STARTED

```

+-----+
| LOADWARE PARAMETERS      CIRCUIT TYPE: DIUS2    SOURCE:DB      BLOCK:    2 |
+-----+
| LNTYPE = COPPER            VERSION = S2            QUAL       = ON |
| MASTER = Y                DCHAN1 = 16            DCHAN2    = 0 |
| PATTERN = D5H             QUAL1 = 10 SEC.        QUAL2     = 10 MIN. |
| SMD     = Y               PERMACT = Y            FCBAB     = DFH |
| CDG      = N               FIXEDTEI = 0            CNTRNR    = 255 |
| TEIVERIF = N              CRC4REP = N |
| DEV      = INDEP |
| INFO     = 2:COPPER-MASTER CLOCK.(CORNET) |
+-----+

```

AMO-LWPAR-111 LOADWARE PARAMETERS FOR NETWORKING MODULES
 DISPLAY COMPLETED;

For Slave-side Configuration

<dis-tdcsu:1-1-73-1;
 DIS-TDCSU:1-1-73-1;
 H500: AMO TDCSU STARTED

```

+-----+
|                            DIGITAL TRUNK (FORMAT=L)    -----+
|                            DEV = S2CONN                    PEN = 1-01-073-1 |
+-----+
| COTNO = 4                  COPNO = 4                  DPLN       = 0 |
| ITR    = 0                  COS       = 32                  LCOSV      = 32 |
| LCOSD = 32                  CCT       = HIPATH S2          DESTNO     = 111 |
| PROTVAR = ETSI            SEGMENT = 1                  TCHARG     = N |
| SUPPRESS = 0                DGTPR    =                    CHIMAP     = N |
| ISDNCC =                    ISDNAC =                    ISDNLC     =     |
| ISDNIP =                    ISDNNP =                    |
| PNPL2C =                    PNPL1C =                    PNPLC      =     |
| PNPL2P =                    PNPL1P =                    PNPAC      =     |
| TRACOUNT = 31               SATCOUNT = MANY            NNO        = 111 |
| ALARMNO = 0                 FIDX     = 1                  CARRIER   = 1 |
| ZONE    = EMPTY             COTX     = 4                  FWDX       = 5 |
| DOMTYPE =                    DOMAINNO =                    TPROFNO    =     |
| INIGHT =                    |
| CCHDL =                    UUSCCX = 16                  UUSCCY    = 8 |
+-----+
| TGRP    = 38                SRCHMODE = CIR               BCNEG      = Y |
| BCGR    = 1                  INS       = Y                  LWPAR     = 3 |
| LWPP    = 0                  LWLT     = 0                  LWPS      = 0 |
| LWR1    = 0                  LWR2     = 0 |
| BCHAN   1 && 30 |
+-----+

```

AMOUNT OF B-CHANNELS IN THIS DISPLAY-OUTPUT: 30

AMO-TDCSU-111 DIGITAL TRUNKS
 DISPLAY COMPLETED;



```
<DISPLAY-LWPAR:INFOPAT="3";
DISPLAY-LWPAR:INFOPAT="3";
H500: AMO LWPAR STARTED
```

```

+-----+
| LOADWARE PARAMETERS      CIRCUIT TYPE: DIUS2  SOURCE:DB  BLOCK: 3 |
+-----+
| LNTYPE = COPPER          VERSION = S2          QUAL = ON      |
| MASTER = N              DCHAN1 = 16          DCHAN2 = 0     |
| PATTERN = D5H          QUAL1 = 10 SEC.        QUAL2 = 10 MIN. |
| SMD = N                PERMACT = Y           FCBAB = DFH    |
| CDG = N                FIXEDTEI = 0          CNTRNR = 255   |
| TEIVERIF = N           CRC4REP = N           |
| DEV = INDEP            |
| INFO = 3:COPPER-DERIVE CLOCK(CORNET)        |
+-----+

```

```
AMO-LWPAR-111          LOADWARE PARAMETERS FOR NETWORKING MODULES
DISPLAY COMPLETED;
```

PSTN Trunk Configuration, TDCSU

```
<dis-tdcsu
PEN1 = 1-1-79-1;
DIS-TDCSU:1-1-79-1;
H500: AMO TDCSU STARTED
```

```

+-----+
|          DEV = S2CONN          PEN = 1-01-079-1          |
+-----+
| COTNO = 4          COPNO = 4          DPLN = 0          |
| ITR = 0            COS = 32           LCOSV = 32         |
| LCOSD = 32        CCT =              DESTNO = 59         |
| PROTVAR = ETSI    SEGMENT = 1        TCHARG = N          |
| SUPPRESS = 0      DGTPR =           CHIMAP = N          |
| ISDNCC =          ISDNAC =          ISDNLC =            |
| ISDNIP =          ISDNNP =          |
| PNPL2C =          PNPL1C =          PNPLC =              |
| PNPL2P =          PNPL1P =          PNPAC =              |
| TRACOUNT = 31     SATCOUNT = MANY   NNO = 59           |
| ALARMNO = 0       FIDX = 1           CARRIER = 1        |
| ZONE = EMPTY      COTX = 4           FWDX = 10           |
| DOMTYPE =         DOMAINNO =        TPROFNO =            |
| INIGHT =          |
| CCHDL =          UUSCCX = 16         UUSCCY = 8          |
+-----+
| TGRP = 71         SRCHMODE = CIR     BCNEG = N          |
| BCGR = 1          INS = Y           LWPAR = 2          |
| LWPP = 0          LWLT = 0          LWPS = 0             |
| LWR1 = 0          LWR2 = 0          |
| BCHAN 1 && 30     |
+-----+

```

AMOUNT OF B-CHANNELS IN THIS DISPLAY-OUTPUT: 30

```
AMO-TDCSU-111          DIGITAL TRUNKS
DISPLAY COMPLETED;
```

Reference Clock Configuration, REFTA For Master-side Configuration

```
<DISPLAY-REFTA:TYPE=CIRCUIT,PEN=1-1-73-1;
DISPLAY-REFTA:TYPE=CIRCUIT,PEN=1-1-73-1;
H500: AMO REFTA STARTED
```

```

+-----+
| R E F E R E N C E   C L O C K   C I R C U I T S          |
+-----+

```



PEN	MODULE	DEVICE	PRI	ERROR	BLOCK	SUPP.	READY BUT ASYN.
1- 1- 73- 1	DIU-N2	S2CONN	0	59090	N		N

AMO-REFTA-111 REFERENCE CLOCK TABLE
DISPLAY COMPLETED;

For Slave-side Configuration

<DISPLAY-REFTA:TYPE=CIRCUIT,PEN=1-1-73-1;
DISPLAY-REFTA:TYPE=CIRCUIT,PEN=1-1-73-1;
H500: AMO REFTA STARTED

R E F E R E N C E C L O C K C I R C U I T S							
PEN	MODULE	DEVICE	PRI	ERROR	BLOCK	SUPP.	READY BUT ASYN.
1- 1- 73- 1	DIU-N2	S2CONN	11	59090	N		N

AMO-REFTA-111 REFERENCE CLOCK TABLE
DISPLAY COMPLETED;

Trunk Least Cost Routing Configuration

LDAT

<DISPLAY-LDAT:TYPE=LCR,LROUTE=38;
DISPLAY-LDAT:TYPE=LCR,LROUTE=38;
H500: AMO LDAT STARTED

LROUTE = 38 LDPLN NAME = PRI SERVICE = ALL									
TYPE = LCR DNN OF ROUTE = 111									
SERVICE INFO =									
LRTEL	LVAL	TGRP	ODR	LAUTH	SCHEDULE ABCDEFGH	CARRIER ZONE	BAND WDTH	LATTR	
1	1	38	1	1	*****	1 EMPTY	1	NONE	
DNN OF ROUTE = 1 -1 -999									

AMO-LDAT -111 LCR-DIRECTIONS
DISPLAY COMPLETED;

RICHT

<dis-richt:lrte,111;
DIS-RICT:LRTE,111;
H500: AMO RICHT STARTED

LRTE = 111	NAME = ROPT CCM	(NEUTRAL)	SRVC = ALL
DNN OF ROUTE = 111	DESTNO = 111		
ROUTOPT = YES	REROUT = YES	PLB = NO	FWDBL = NO
MFV: CNV=WITHOUT DSP=WITHOUT TEXT=			PULS=
ROUTENO = 15	BUGS = LIN	ROUTATT = NO	MAINGRP = 15
INFO =			



```
| TGRP = 38 LDAT PRI MWI          (NEUTRAL)  SUBGROUP = 9 |
+-----+
```

```
AMO-RICHT-111      TRUNK ROUTING
DISPLAY COMPLETED;
```

PSTN RICHT

```
DIS-RICHT:LRTE,916,;
H500: AMO RICHT STARTED
```

```
+-----+
| LRTE = 916   NAME = 91650 PSTN      (NEUTRAL)  SRVC = ALL
| DNNO =      59   DESTNO = 59
| ROUTOPT = YES  REROUT = YES  PLB = NO      FWDBL = NO
| MFV: CNV=WITHOUT DSP=WITHOUT TEXT=      PULS=
| ROUTENO =    20  BUGS = LIN  ROUTATT = NO      MAINGRP = 20
| INFO =
+-----+
| TGRP = 71 LDAT CLOSED NUMBER E1      (NEUTRAL)  SUBGROUP = 19 |
+-----+
```

```
AMO-RICHT-111      TRUNK ROUTING
DISPLAY COMPLETED;
```

LCR Out-dial Rules, LODR

```
<dis-lodr:1;
DIS-LODR:1;
H500: AMO LODR STARTED
```

```
+-----+
| ODR   POSITION  CMD      PARAMETER
+-----+
| 1     1       ECHO     2
|     2       END
+-----+
| INFO:PSTN
+-----+
```

```
H03: THE NEXT FREE ODR IS 7
```

```
AMO-LODR -111      ADMINISTRATION OF LCR OUTDIAL RULES
DISPLAY COMPLETED;
```



Configuring Cisco Unified CallManager

6608-E1 Gateway Configuration

The screenshot shows the Cisco CallManager 4.0 Administration web interface in Microsoft Internet Explorer. The browser address bar shows the URL: `http://cm-kingonj/CCMAdmin/gatewayconfig.asp?pkid={2E043967-780A-4425-8FEF-343CBAD17186}&type=2`. The page title is "Gateway Configuration".

System Route Plan Service Feature Device User Application Help

Cisco CallManager Administration
For Cisco IP Telephony Solutions

Gateway Configuration [Back to Find/List Gateways](#)
[Dependency Records](#)

Product : Cisco Catalyst 6000 E1 VoIP Gateway
Gateway : S0/DS1-0@SDA0001C9D8633E
Device Protocol: Digital Access PRI
Registration: Registered with Cisco CallManager 172.20.32.254
IP Address: 172.20.32.103

Status: Ready

Device Information

MAC Address*	<input type="text" value="0001C9D8633E"/>
Description	<input type="text" value="SDA0001C9D8633E"/>
Device Pool*	<input type="text" value="Default"/>
Network Locale	<input type="text" value="United States"/>
Media Resource Group List	<input type="text" value="< None >"/>
Location	<input type="text" value="< None >"/>
AAR Group	<input type="text" value="< None >"/>
Load Information	<input type="text"/>

Multilevel Precedence and Preemption (MLPP) Information

MLPP Domain (e.g., "0000FF")	<input type="text"/>
MLPP Indication	Not available on this device
MLPP Preemption	Not available on this device

Interface Information

PRI Protocol Type*	<input type="text" value="PRI EURO"/>
Protocol Side*	<input type="text" value="User"/>
Channel Selection Order*	<input type="text" value="Top Down"/>
Channel IE Type*	<input type="text" value="Timeslot Number"/>

Done Local intranet



Cisco CallManager 4.0 Administration - Gateway Configuration - Microsoft Internet Explorer

File Edit View Favorites Tools Help

Address <http://cm-klngon/CCMAdmin/gatewayconfig.asp?pkid={2E043967-780A-4425-8FEF-343CBAD17186}&type=2> Go Links >>

PCM Type* A-law

Delay for first restart (1/8 sec ticks) 32

Delay between restarts (1/8 sec ticks) 4

Inhibit restarts at PRI initialization

Enable status poll

Call Routing Information

Inbound Calls

Significant Digits* All

Calling Search Space Incoming Trunk

AAR Calling Search Space < None >

Prefix DN

Outbound Calls

Calling Line ID Presentation* Default

Calling Party Selection* Originator

Called party IE number type unknown* Unknown

Calling party IE number type unknown* Unknown

Called Numbering Plan* Private

Calling Numbering Plan* Unknown

Number of digits to strip* 0

Caller ID DN

SMDI Base Port* 0

PRI Protocol Type Specific Information

Display IE Delivery

Redirecting Number IE Delivery - Outbound

Redirecting Number IE Delivery - Inbound

Send Extra Leading Character In DisplayIE***

Setup non-ISDN Progress Indicator IE Enable****

MCDN Channel Number Extension Bit Set to Zero**

Local intranet



Cisco CallManager 4.0 Administration - Gateway Configuration - Microsoft Internet Explorer

File Edit View Favorites Tools Help

Address <http://cm-kingon/CCMAdmin/gatewayconfig.asp?pkid={2E043967-780A-4425-8FEF-343CBAD17186}&type=2> Go Links

MCDN Channel Number Extension Bit Set to Zero**

Send Calling Name In Facility IE

Interface Identifier Present**

Interface Identifier Value**

Connected Line ID Presentation (QSIG Inbound Call)*

Connected PBX Model

Product Specific Configuration

Clock Reference*

Framing*

Audio Signal Adjustment into IP Network*

Audio Signal Adjustment from IP Network*

Zero Suppression*

Digit On Duration(50-500ms)*

Interdigit Duration(50-500msec)*

SNMP Community String

Disable SNMP Set operations*

Debug Port Enable*

Hold Tone Silence Duration*

Port Used for Voice Calls*

Port Used for Modem Calls*

Port Used for Fax Calls*

Fax and Modem Parameters

Fax Relay Enable*

Fax Error Correction Mode Override*

Maximum Fax Rate*

Fax Payload Size*

Non Standard Facilities Country Code*

Non Standard Facilities Vendor

Local intranet



Cisco CallManager 4.0 Administration - Gateway Configuration - Microsoft Internet Explorer

File Edit View Favorites Tools Help

Address <http://cm-kingon/CCMAdmin/gatewayconfig.asp?pkid={2E043967-780A-4425-8FEF-343CBAD17186}&type=2> Go Links >>

Non Standard Facilities Vendor Code*

Fax/Modem Packet Redundancy*

NSE Type*

Playout Delay Parameters

Initial Playout Delay*

Minimum Playout Delay*

Maximum Playout Delay*

Echo Canceller Configuration

Echo TailLength (ms)*

Minimum ERL (db)*

* indicates required item
** applicable to DMS-100 protocol only
*** applicable to DMS-100 protocol and DMS-250 protocol only
**** may be required to force ringback from some PBXs

[Back to Find/List Gateways](#)

Local intranet



Enbloc Route Pattern Configuration

Cisco CallManager 4.0 Administration - Route Pattern/Hunt Pilot Configuration - Microsoft Internet Explorer

Address: http://cm-kingonj/CCMAdmin/routepatternconfig.asp?pkid={3F08903A-3126-4CE1-95DF-9E01A95B7DC4}&status=uc

Route Pattern/Hunt Pilot: 8XXX

Status: Update completed
Note: Any update to this Route Pattern or Hunt Pilot automatically resets the associated gateway or Route/Hunt List

Copy Update Delete

Pattern Definition

Route Pattern/Hunt Pilot* 8XXX

Partition < None >

Description

Numbering Plan* North American Numbering Plan

Route Filter < None >

MLPP Precedence Default

Gateway or Route/Hunt List* S0/DS1-0@SDA0001C9D8633E (Edit)

Route Option

Route this pattern

Block this pattern - Not Selected -

Provide Outside Dial Tone Allow Overlap Sending Urgent Priority

Calling Party Transformations

Use Calling Party's External Phone Number Mask

Calling Party Transform Mask

Prefix Digits (Outgoing Calls)

Calling Line ID Presentation Default

Calling Name Presentation Default

Connected Party Transformations

Connected Line ID Presentation Default

Connected Name Presentation Default

Called Party Transformations

Discard Digits < None >

Called Party Transform Mask

Prefix Digits (Outgoing Calls)

ISDN Network-Specific Facilities Information Element

Carrier Identification Code

Network Service Protocol - Not Selected -

Network Service	Service Parameter Name	Service Parameter Value
- Not Selected -	< Not Exist >	

Done Local intranet



Overlap Sending Route Pattern Configuration

Cisco CallManager 4.0 Administration - Route Pattern/Hunt Pilot Configuration - Microsoft Internet Explorer

Address: http://cm-klington/CCMAdmin/routepatternconfig.asp?pkid={E959BFF6-5645-4444-9E24-2768AFCAAD03}

Route Pattern/Hunt Pilot: 9.X

Status: Ready
Note: Any update to this Route Pattern or Hunt Pilot automatically resets the associated gateway or Route/Hunt List

Copy Update Delete

Pattern Definition

Route Pattern/Hunt Pilot* 9.X
Partition < None >
Description
Numbering Plan* North American Numbering Plan
Route Filter < None >
MLPP Precedence Default
Gateway or Route/Hunt List* S0/DS1-0@SDA0001C9D8633E (Edit)
Route Option
 Route this pattern
 Block this pattern — Not Selected —

Provide Outside Dial Tone Allow Overlap Sending Urgent Priority

Calling Party Transformations

Use Calling Party's External Phone Number Mask
Calling Party Transform Mask
Prefix Digits (Outgoing Calls)
Calling Line ID Presentation Default
Calling Name Presentation Default

Connected Party Transformations

Connected Line ID Presentation Default
Connected Name Presentation Default

Called Party Transformations

Discard Digits PreDot
Called Party Transform Mask
Prefix Digits (Outgoing Calls)

ISDN Network-Specific Facilities Information Element

Carrier Identification Code
Network Service Protocol — Not Selected —
Network Service Service Parameter Name Service Parameter Value
— Not Selected — < Not Exist >

Done Local intranet



PSTN Route Pattern Configuration

Cisco CallManager 4.0 Administration - Route Pattern/Hunt Pilot Configuration - Microsoft Internet Explorer

Address: http://cm-klngon/CCMAdmin/routepatternconfig.asp?pkid={A0E58AC2-80ED-4857-9D43-DCC43AA6EA56}

Route Pattern/Hunt Pilot: 91650XXXXXX

Status: Ready
Note: Any update to this Route Pattern or Hunt Pilot automatically resets the associated gateway or Route/Hunt List

Copy Update Delete

Pattern Definition

Route Pattern/Hunt Pilot* 91650XXXXXX

Partition < None >

Description

Numbering Plan* North American Numbering Plan

Route Filter < None >

MLPP Precedence Default

Gateway or Route/Hunt List* S0/DS1-0@SDA0001C9D8633E (Edit)

Route Option

Route this pattern

Block this pattern — Not Selected —

Provide Outside Dial Tone Allow Overlap Sending Urgent Priority

Calling Party Transformations

Use Calling Party's External Phone Number Mask

Calling Party Transform Mask

Prefix Digits (Outgoing Calls)

Calling Line ID Presentation Default

Calling Name Presentation Default

Connected Party Transformations

Connected Line ID Presentation Default

Connected Name Presentation Default

Called Party Transformations

Discard Digits < None >

Called Party Transform Mask

Prefix Digits (Outgoing Calls)

ISDN Network-Specific Facilities Information Element

Carrier Identification Code

Network Service Protocol — Not Selected —

Network Service — Not Selected — Service Parameter Name < Not Exist > Service Parameter Value

Done Local intranet



7960 IP phone Configuration

Cisco CallManager 4.0 Administration - Phone Configuration - Microsoft Internet Explorer

File Edit View Favorites Tools Help

Back Forward Stop Refresh Home Search Favorites Media Print

Address <http://cm-klngon/CCMAdmin/phoneconfig.asp?pkid={ED74929A-A8BB-4A58-8129-2E4358F511BB}> Go Links

Phone Configuration

[Add a new phone](#)
[Add/Update Speed Dials](#)
[Subscribe/Unsubscribe Services](#)
[Dependency Records](#)
[Back to Find/List Phones](#)

Directory Numbers

Base Phone

- 7960 Line 1 - 4001 in Phones
- 7960 Line 2 - Add new DN

Phone: SEP003094C39863 (Auto 4001)
Registration: Registered with Cisco CallManager 172.20.32.254
IP Address: [172.20.32.110](#)
Status: Ready

Copy Update Delete Reset Phone

Phone Configuration (Model = Cisco 7960)

Device Information

MAC Address*	003094C39863
Description	Auto 4001
Owner User ID	<input type="text"/> (Select User ID)
Device Pool*	Default (View details)
Calling Search Space	< None >
AAR Calling Search Space	< None >
Media Resource Group List	< None >
User Hold Audio Source	< None >
Network Hold Audio Source	< None >
Location	< None >
User Locale	< None >
Network Locale	< None >
Device Security Mode	Use System Default
Built In Bridge	Default
Privacy	Default

Phone Button Template Information

Phone Button Template*	Standard 7960 (View button list)
------------------------	----------------------------------

Softkey Template Information

Softkey Template	< None >
------------------	----------

Expansion Module Information

Module 1	< None >
Module 2	< None >

Done Local intranet



Cisco CallManager 4.0 Administration - Phone Configuration - Microsoft Internet Explorer

File Edit View Favorites Tools Help

Address <http://cm-klngon/CCMAdmin/phoneconfig.asp?pkid={ED74929A-A8BB-4A58-8129-2E4358F511BB}>

Module 1 Load Name (Module 1 selection required)

Module 2 Load Name (Module 2 selection required)

Cisco IP Phone - External Data Locations (leave blank to use default)

Information

Directory

Messages

Services

Authentication Server

Proxy Server

Idle

Idle Timer (seconds)

Extension Mobility (Device Profile) Information

Enable Extension Mobility Feature

Log Out Profile

Log In User ID

Log In Time

Log Out Time

Multilevel Precedence and Preemption (MLPP) Information

MLPP Domain (e.g., "0000FF")

MLPP Indication

MLPP Preemption

Product Specific Configuration

Disable Speakerphone

Disable Speakerphone and Headset

Forwarding Delay*

PC Port*

Settings Access*

Gratuitous ARP*

PC Voice VLAN Access*

Video Capabilities*

Auto Line Select*

Done Local intranet



Cisco CallManager 4.0 Administration - Directory Number Configuration - Microsoft Internet Explorer

File Edit View Favorites Tools Help

Address <http://cm-klingson/CCMAAdmin/directorynumber.asp?NumPlanMapID={17A63DCE-883B-4403-A131-B02B19FC9CF4}> Go Links

Directory Number Configuration

[Configure Device \(SEP003094C39863\)](#)
[Dependency Records](#)

Associated With
SEP003094C39863
7960 (Line 1)

Directory Number: 4001 (Phones)
Status: Ready
Note: Any update to this Directory Number automatically resets the associated devices

Update Remove from Device Reset Devices

Directory Number

Directory Number* 4001
Partition Phones

Directory Number Settings

Voice Mail Profile <None>
(Choose <None> to use default)
Calling Search Space Phones
AAR Group <None>
User Hold Audio Source <None>
Network Hold Audio Source <None>
Auto Answer Auto Answer Off

Call Forward and Pickup Settings

	Voice Mail Destination	Calling Search Space
Forward All <input type="checkbox"/>		<None>
Forward Busy <input type="checkbox"/>		<None>
Forward No Answer <input type="checkbox"/>		<None>
No Answer Ring Duration	(seconds)	
Call Pickup Group	<None>	

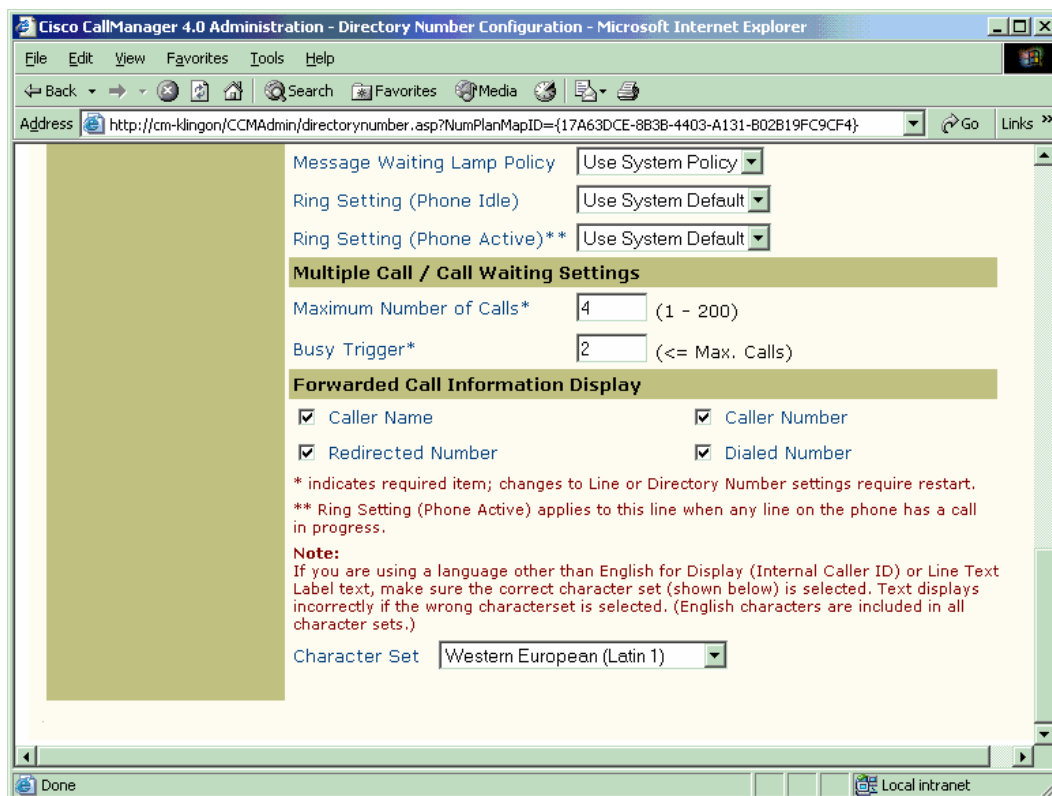
MLPP Alternate Party Settings

Target (Destination)
Calling Search Space <None>
No Answer Ring Duration (seconds)

Line Settings for this Device

Display (Internal Caller ID) JOHN DOE
Line Text Label
External Phone Number Mask

Done Local intranet



Important Information

THE SPECIFICATIONS AND INFORMATION REGARDING THE PRODUCTS IN THIS MANUAL ARE SUBJECT TO CHANGE WITHOUT NOTICE. ALL STATEMENTS, INFORMATION, AND RECOMMENDATIONS IN THIS MANUAL ARE BELIEVED TO BE ACCURATE BUT ARE PRESENTED WITHOUT WARRANTY OF ANY KIND, EXPRESS OR IMPLIED. USERS MUST TAKE FULL RESPONSIBILITY FOR THEIR APPLICATION OF ANY PRODUCTS.

IN NO EVENT SHALL CISCO OR ITS SUPPLIERS BE LIABLE FOR ANY INDIRECT, SPECIAL, CONSEQUENTIAL, OR INCIDENTAL DAMAGES, INCLUDING, WITHOUT LIMITATION, LOST PROFITS OR LOSS OR DAMAGE TO DATA ARISING OUT OF THE USE OR INABILITY TO USE THIS MANUAL, EVEN IF CISCO OR ITS SUPPLIERS HAVE BEEN ADVISED OF THE POSSIBILITY OF SUCH DAMAGES.



Corporate Headquarters

Cisco Systems, Inc.
170 West Tasman Drive
San Jose, CA 95134-1706
USA
www.cisco.com
Tel: 408 526-4000
800 553-NETS (6387)
Fax: 408 526-4100

European Headquarters

Cisco Systems International
BV
Haarlerbergpark
Haarlerbergweg 13-19
1101 CH Amsterdam
The Netherlands
www-europe.cisco.com
Tel: 31 0 20 357 1000
Fax: 31 0 20 357 1100

Americas Headquarters

Cisco Systems, Inc.
170 West Tasman Drive
San Jose, CA 95134-1706
USA
www.cisco.com
Tel: 408 526-7660
Fax: 408 527-0883

Asia Pacific Headquarters

Cisco Systems, Inc.
Capital Tower
168 Robinson Road
#22-01 to #29-01
Singapore 068912
www.cisco.com
Tel: +65 317 7777
Fax: +65 317 7799

Cisco Systems has more than 200 offices in the following countries and regions. Addresses, phone numbers, and fax numbers are listed on **the Cisco Web site at www.cisco.com/go/offices.**

Argentina • Australia • Austria • Belgium • Brazil • Bulgaria • Canada • Chile • China PRC • Colombia • Costa Rica • Croatia • Czech Republic • Denmark • Dubai, UAE • Finland • France • Germany • Greece • Hong Kong SAR • Hungary • India • Indonesia • Ireland • Israel • Italy • Japan • Korea • Luxembourg • Malaysia • Mexico • The Netherlands • New Zealand • Norway • Peru • Philippines • Poland • Portugal • Puerto Rico • Romania • Russia • Saudi Arabia • Scotland • Singapore • Slovakia • Slovenia • South Africa • Spain • Sweden • Switzerland • Taiwan • Thailand • Turkey • Ukraine • United Kingdom • United States • Venezuela • Vietnam • Zimbabwe

Copyright 2003 Cisco Systems, Inc. All rights reserved. Cisco, Cisco Systems, and the Cisco Systems logo are registered trademarks or trademarks of Cisco Systems, Inc. and/or its affiliates in the U.S. and certain other countries. All other trademarks mentioned in this document or Web site are the property of their respective owners. The use of the word partner does not imply a partnership relationship between Cisco and any other company. (0301R)