

Cisco CallManager 4.0-PBX Interoperability: Lucent/Avaya Definity G3 MV1.3 PBX using 6608-T1 PRI NI2 with MGCP

Introduction

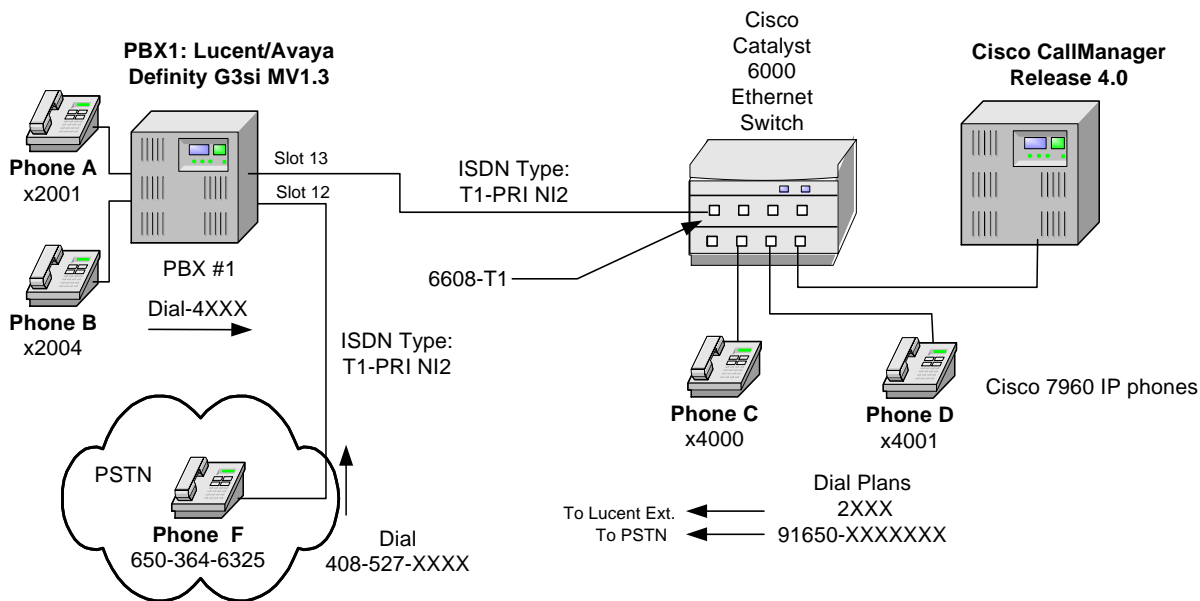
This is an application note for connectivity of Lucent/Avaya Definity G3si MV1.3 PBX with Cisco CallManager Release 4.0 using Cisco 6608-T1 PRI NI2 as MGCP gateway.

- Connectivity is achieved by using the industry standard PRI NI-2 protocol.
- The Lucent/Avaya Definity G3si MV1.3 PBX and the Cisco CallManager can be configured as either NETWORK or USER.

Network Topology

The following diagram shows the test setup for end-to-end interoperability with the Cisco CallManager connected to the PBX via 6608-T1 PRI link as MGCP gateway.

Basic Call Setup End-to-End Configuration



Limitations

When calling from a Lucent/Avaya digital phone to a Cisco 7960 IP phone, the Cisco IP phone displays the Calling Name and Number after the call is answered. The Lucent/Avaya phone displays “Connected Name” but does not display “Connected Number”. The Cisco CallManager PRI trunk does not support sending “Connected Number” information in the connect message back to PBX.



System Components

Hardware Requirements

- Cisco Catalyst 6000 switch with 6608-T1 gateway
- Lucent/Avaya Definity G3si MV1.3 PBX, TN464F, DS1 INTFC 24/32
- Cisco CallManager

Software Requirements

- PBX Software Release MV1.3
- Cisco CallManager Release 4.0

Features

Key Features Supported

- Calling/Called Number
- Calling/Connected Name

Key features not supported

- Connected Number not supported on CallManager 4.0

Configuration

Configuring the Lucent/Avaya Definity G3si MV1.3 PBX

Configure in the following sequence:

1. Add the new circuit pack.
2. Add the new signaling group.
3. Add the new trunk group.
4. Add Uniform Dialing Plan.



DS1 Circuit Pack

Avaya Site Administration - [multivantage GEDI]

File Edit View System Action Tools Window Help

change ds1 a13 send (return) help (f5) cancel (esc) enter (f3) schedule (f9) next (f7) previous (f8)

1 2

DS1 CIRCUIT PACK

Location:	01A13	Name:	T1 PRI
Bit Rate:	1.544	Line Coding:	b8zs
Line Compensation:	1	Framing Mode:	esf
Signaling Mode:	isdn-pri		
Connect:	line-side		
TN-C7 Long Timers?	n	Country Protocol:	1
Interworking Message:	PROGress	Protocol Version:	b
Interface Companding:	mulaw	CRC?	n
Idle Code:	11111111		
		DCP/Analog Bearer Capability:	3.1kHz

Slip Detection? Alarm When PRI Endpoint Detached?

Near-end CSU Type: other

Right-click in a field to see a list of valid entries or help text

Ready

NUM



Signaling Group

Avaya Site Administration - [multivantage GEDI]

File Edit View System Action Tools Window Help

change signaling-group 13 send (return) help (f5) cancel (esc) enter (f3) schedule (f9) next (f7) previous (f8)

1 2 3 4 5

SIGNALING GROUP

Group Number: 13 Group Type: isdn-pri

Associated Signaling? Max number of NCA TSC: 5

Primary D-Channel: 01A1324 Max number of CA TSC: 23

Trunk Group for Channel Selection: 13 Trunk Group for NCA TSC: 13

Supplementary Service Protocol: a X-Mobility/Wireless Type: NONE

Right-click in a field to see a list of valid entries or help text

Ready NUM



Trunk Group

Avaya Site Administration - [multivantage GEDI]

File Edit View System Action Tools Window Help

change trunk-group 13 send (return) help (f5) cancel (esc) enter (f3) schedule (f9) next (f7) previous (f8)

1 2 3 4 5 6 7 8 9

TRUNK GROUP

Group Number: 13 Group Type: isdn CDR Reports:
Group Name: T1 PRI to 6608-T1 CDR: 1 TN: 1 TAC: 613
Direction: two-way Outgoing Display? Carrier Medium: PRI/BRI
Dial Access? Busy Threshold: 99 Night Service:
Queue Length: 0
Service Type: tie Auth Code? n TestCall ITC: rest
Far End Test Line No:
TestCall BCC: 4

TRUNK PARAMETERS

Codeset to Send Display: 0 Codeset to Send National IEs: 6
Max Message Size to Send: 260 Charge Advice: during-on-request
Supplementary Service Protocol: a Digit Handling (in/out): overlap/enbloc
Digit Treatment: Digits:
Trunk Hunt: ascend QSIG Value-Added? n
Digital Loss Group: 13
Calling Number - Delete: Insert: Numbering Format: lev0-put
Bit Rate: 1200 Synchronization: async Duplex: full
Disconnect Supervision - In? Out?
Answer Supervision Timeout: 0

Right-click in a field to see a list of valid entries or help text

Ready NUM



Avaya Site Administration - [multivantage GEDI]

File Edit View System Action Tools Window Help

change trunk-group 13 send (return) help (f5) cancel (esc) enter (f3) schedule (f9) next (f7) previous (f8)

1 2 3 4 5 6 7 8 9

TRUNK FEATURES

ACA Assignment? Measured: Wideband Support?
Internal Alert? Maintenance Tests?
Data Restriction? NCA-TSC Trunk Member:
Send Name: Send Calling Number:

Used for DCS?
Suppress # Outpulsing? Numbering Format:
Outgoing Channel ID Encoding: UUI IE Treatment:
Charge Conversion:
Decimal Point: Replace Restricted Numbers?
Currency Symbol: Replace Unavailable Numbers?
Charge Type: Send Connected Number:

Send UUI IE?
Send UCID?
Send Codeset 6/7 LAI IE? Ds1 Echo Cancellation?

US NI Delayed Calling Name Update?

SBS? Network (Japan) Needs Connect Before Disconnect?

Right-click in a field to see a list of valid entries or help text
Ready



Avaya Site Administration - [multivantage GEDI]

File Edit View System Action Tools Window Help

change trunk-group 13 send (return) help (f5) cancel (esc) enter (f3) schedule (f9) next (f7) previous (f8)

1 2 3 4 5 6 7 8 9

TRUNK GROUP
Administered Members (min/max): 1/23
Total Administered Members: 23

GROUP MEMBER ASSIGNMENTS

	Port	Code	Sfx	Name	Night	Sig Grp
1:	01A1301	TN464	F			13
2:	01A1302	TN464	F			13
3:	01A1303	TN464	F			13
4:	01A1304	TN464	F			13
5:	01A1305	TN464	F			13
6:	01A1306	TN464	F			13
7:	01A1307	TN464	F			13
8:	01A1308	TN464	F			13
9:	01A1309	TN464	F			13
10:	01A1310	TN464	F			13
11:	01A1311	TN464	F			13
12:	01A1312	TN464	F			13
13:	01A1313	TN464	F			13
14:	01A1314	TN464	F			13
15:	01A1315	TN464	F			13

Right-click in a field to see a list of valid entries or help text

Ready NUM



Avaya Site Administration - [multivantage GEDI]

File Edit View System Action Tools Window Help

change trunk-group 13 send (return) help (f5) cancel (esc) enter (f3) schedule (f9) next (f7) previous (f8)

1 2 3 4 5 6 7 8 9

TRUNK GROUP

Administered Members (min/max): 1/23
Total Administered Members: 23

GROUP MEMBER ASSIGNMENTS

Port	Code	Sfx	Name	Night	Sig Grp
16:	01A1316	TN464	F		13
17:	01A1317	TN464	F		13
18:	01A1318	TN464	F		13
19:	01A1319	TN464	F		13
20:	01A1320	TN464	F		13
21:	01A1321	TN464	F		13
22:	01A1322	TN464	F		13
23:	01A1323	TN464	F		13
24:					
25:					
26:					
27:					
28:					
29:					
30:					

Right-click in a field to see a list of valid entries or help text

Ready NUM



Uniform Dialing Plan

Avaya Site Administration - [multivantage GEDI]

File Edit View System Action Tools Window Help

multivantage

change dialplan analysis send (return) help (f5) cancel (esc) enter (f3) schedule (f9) next (f7) previous (f8)

1 2 3

DIAL PLAN ANALYSIS TABLE Percent Full: 7

Dialed String	Total Length	Call Type	Dialed String	Total Length	Call Type	Dialed String	Total Length	Call Type
0	1	attd						
16	4	ext						
20	4	ext						
3	4	ext						
4	4	ext						
5	4	ext						
6	3	dac						
8	1	fac						
9	1	fac						
*	3	fac						

Right-click in a field to see a list of valid entries or help text

Ready NUM



Avaya Site Administration - [multivantage GEDI]

File Edit View System Action Tools Window Help

change aar analysis 444 send (return) help (f5) cancel (esc) enter (f3) schedule (f9) next (f7) previous (f8)

1 | 2

AAR DIGIT ANALYSIS TABLE Percent Full: 8

Dialed String	Total		Route Pattern	Call Type	Node Num	ANI Reqd
	Min	Max				
444	7	7	104	lev0	2	n
469	10	10	11	aar		n
5	7	7	254	aar		n
555	7	7	105	lev0	3	n
6	7	7	254	aar		n
600	7	7	11	aar		n
605	7	7	5	aar		n
608	7	7	8	aar		n
609	7	7	9	aar		n
611	7	7	11	lev0	10	n
612	7	7	13	aar		n
613	4	28	13	aar		n
614	3	28	14	aar		n
615	7	7	15	aar		n
616	7	7	16	aar		n

Right-click in a field to see a list of valid entries or help text

Ready NUM



Avaya Site Administration - [multivantage GEDI]

File Edit View System Action Tools Window Help

multivantage

change route-pattern 104 send (return) help (f5) cancel (esc) enter (f3) schedule (f9) next (f7) previous (f8)

1

Pattern Number: 104 Pattern Name:

Grp No	FRL No	NPA	Pfx Mrk	Hop Lmt	Toll List	No. Del	Inserted Dgts	DCS/ IXC QSIG Intw
1:	13	0		6		3		n user
2:	14	0		6		3		n user
3:								n user
4:								n user
5:								n user
6:								n user

Grp No	BCC VALUE	TSC	CA-TSC Request	ITC	BCIE	Service/Feature	BAND	No. Dgts	Numbering Format	LAR
1:	0 1 2 3 4 W	y	as-needed	bothept					lev0-put	none
2:		y	as-needed	bothept					lev0-put	none
3:		n		rest						none
4:		n		rest						none
5:		n		rest						none
6:		n		rest						none

Right-click in a field to see a list of valid entries or help text

Ready NUM



PSTN DS1 Circuit Pack Configuration

Avaya Site Administration - [multivantage GEDI]

File Edit View System Action Tools Window Help

multivantage

change ds1 a12 send (return) help (f5) cancel (esc) enter (f3) schedule (f9) next (f7) previous (f8)

1 2

DS1 CIRCUIT PACK

Location:	01A12	Name:	T1 PSTN PRI
Bit Rate:	1.544	Line Coding:	b8zs
Line Compensation:	1	Framing Mode:	esf
Signaling Mode:	isdn-pri		
Connect:	network		
TN-C7 Long Timers?	n	Country Protocol:	1
Interworking Message:	PROGRESS	Protocol Version:	b
Interface Companding:	mulaw	CRC?	n
Idle Code:	11111111		
		DCP/Analog Bearer Capability:	3.1kHz
Slip Detection?	y	Near-end CSU Type:	other

Right-click in a field to see a list of valid entries or help text

Ready NUM



PSTN Signaling Group

Avaya Site Administration - [multivantage GEDI]

File Edit View System Action Tools Window Help

multivantage

change signaling-group 12 send (return) help (f5) cancel (esc) enter (f3) schedule (f9) next (f7) previous (f8)

1 2 3 4 5

SIGNALING GROUP

Group Number: 12 Group Type: isdn-pri

Associated Signaling? Max number of NCA TSC:

Primary D-Channel: Max number of CA TSC:

Trunk Group for Channel Selection: Trunk Group for NCA TSC:

Supplementary Service Protocol: X-Mobility/Wireless Type:

Right-click in a field to see a list of valid entries or help text

Ready



PSTN Trunk Configuration

Avaya Site Administration - [multivantage GEDI]

File Edit View System Action Tools Window Help

change trunk-group 12 send (return) help (f5) cancel (esc) enter (f3) schedule (f9) next (f7) previous (f8)

1 2 3 4 5 6 7 8 9 10

TRUNK GROUP

Group Number: 12 Group Type: isdn CDR Reports: y
Group Name: MU1.2 to PSTN on U6 COR: 1 TN: 1 TAC: 612
Direction: two-way Outgoing Display? y Carrier Medium: PRI/BRI
Dial Access? y Busy Threshold: 99 Night Service:
Queue Length: 0
Service Type: public-ntwrk Auth Code? n TestCall ITC: rest
Far End Test Line No:
TestCall BCC: 4

TRUNK PARAMETERS

Codeset to Send Display: 0 Codeset to Send National IEs: 7
Max Message Size to Send: 260 Charge Advice: none
Supplementary Service Protocol: a Digit Handling (in/out): enbloc/enbloc
Trunk Hunt: ascend QSIG Value-Added? n
Digital Loss Group: 13
Calling Number - Delete: Insert: Numbering Format:
Bit Rate: 1200 Synchronization: async Duplex: full
Disconnect Supervision - In? y Out? n
Answer Supervision Timeout: 0

Right-click in a field to see a list of valid entries or help text

Ready NUM



Avaya Site Administration - [multivantage GEDI]

File Edit View System Action Tools Window Help

multivantage

change trunk-group 12 send (return) help (f5) cancel (esc) enter (f3) schedule (f9) next (f7) previous (f8)

1 2 3 4 5 6 7 8 9 10

TRUNK FEATURES

ACA Assignment? Measured: Wideband Support?
Maintenance Tests?

Data Restriction? NCA-TSC Trunk Member:
Send Name: Send Calling Number:

Used for DCS?
Suppress # Outpulsing? Numbering Format:
Outgoing Channel ID Encoding: UUI IE Treatment:

Replace Restricted Numbers?
Replace Unavailable Numbers?
Send Connected Number:

Send UUI IE?
Send UCID?
Send Codeset 6/7 LAI IE? Ds1 Echo Cancellation?

US NI Delayed Calling Name Update?

SBS? Network (Japan) Needs Connect Before Disconnect?

Right-click in a field to see a list of valid entries or help text

Ready



Avaya Site Administration - [multivantage GEDI]

File Edit View System Action Tools Window Help

multivantage

change trunk-group 12 send (return) help (f5) cancel (esc) enter (f3) schedule (f9) next (f7) previous (f8)

1 2 3 4 5 6 7 8 9 10

TRUNK GROUP
Administered Members (min/max): 1/15
Total Administered Members: 15

GROUP MEMBER ASSIGNMENTS

	Port	Code	Sfx	Name	Night	Sig Grp
1:	01A1201	TN464	F			12
2:	01A1202	TN464	F			12
3:	01A1203	TN464	F			12
4:	01A1204	TN464	F			12
5:	01A1205	TN464	F			12
6:	01A1206	TN464	F			12
7:	01A1207	TN464	F			12
8:	01A1208	TN464	F			12
9:	01A1209	TN464	F			12
10:	01A1210	TN464	F			12
11:	01A1211	TN464	F			12
12:	01A1212	TN464	F			12
13:	01A1213	TN464	F			12
14:	01A1214	TN464	F			12
15:	01A1215	TN464	F			12

Right-click in a field to see a list of valid entries or help text

Ready NUM



PSTN Access Code (9)

Avaya Site Administration - [multivantage GEDI]

File Edit View System Action Tools Window Help

multivantage

change feature-access-codes send (return) help (f5) cancel (esc) enter (f3) schedule (f9) next (f7) previous (f8)

1 2 3 4 5 6 7

FEATURE ACCESS CODE (FAC)

Abbreviated Dialing List1 Access Code:	<input type="text"/>	
Abbreviated Dialing List2 Access Code:	<input type="text"/>	
Abbreviated Dialing List3 Access Code:	<input type="text"/>	
Abbreviated Dial - Prgm Group List Access Code:	<input type="text"/>	
Announcement Access Code:	<input type="text"/>	
Answer Back Access Code:	<input type="text"/>	
Auto Alternate Routing (AAR) Access Code:	<input type="text" value="8"/>	
Auto Route Selection (ARS) - Access Code 1:	<input type="text" value="9"/>	Access Code 2: <input type="text"/>
Automatic Callback Activation:	<input type="text"/>	Deactivation: <input type="text"/>
Call Forwarding Activation Busy/DA: <input type="text" value="*66"/> All: <input type="text" value="*67"/>		Deactivation: <input type="text" value="*69"/>
Call Park Access Code:	<input type="text"/>	
Call Pickup Access Code:	<input type="text"/>	
CAS Remote Hold/Answer Hold-Unhold Access Code:	<input type="text"/>	
CDR Account Code Access Code:	<input type="text"/>	
Change COR Access Code:	<input type="text"/>	
Change Coverage Access Code:	<input type="text"/>	
Data Origination Access Code:	<input type="text"/>	
Data Privacy Access Code:	<input type="text"/>	
Directed Call Pickup Access Code:	<input type="text"/>	

Right-click in a field to see a list of valid entries or help text

Ready



PSTN Dialing Plan

Avaya Site Administration - [multivantage GEDI]

File Edit View System Action Tools Window Help

change ars analysis 165 send (return) help (f5) cancel (esc) enter (f3) schedule (f9) next (f7) previous (f8)

1 2

ARS DIGIT ANALYSIS TABLE
Location: all Percent Full: 8

Dialed String	Total		Route Pattern	Call Type	Node Num	ANI Req'd
	Min	Max				
165	11	11	111	fnpa		n
166	11	11	deny	fnpa		n
167	11	11	deny	fnpa		n
168	11	11	deny	fnpa		n
169	11	11	deny	fnpa		n
170	11	11	deny	fnpa		n
1700	11	11	deny	fnpa		n
171	11	11	deny	fnpa		n
172	11	11	deny	fnpa		n
173	11	11	deny	fnpa		n
174	11	11	deny	fnpa		n
175	11	11	deny	fnpa		n
176	11	11	deny	fnpa		n
177	11	11	deny	fnpa		n
178	11	11	deny	fnpa		n

Right-click in a field to see a list of valid entries or help text

Ready NUM



Avaya Site Administration - [multivantage GEDI]

File Edit View System Action Tools Window Help

change route-pattern 111 send (return) help (f5) cancel (esc) enter (f3) schedule (f9) next (f7) previous (f8)

1

Pattern Number: 111 Pattern Name:

Grp No	FRL	NPA	Pfx	Hop	Toll	No.	Inserted	DCS/	IXC
							Dgts	QSIG	
1:	<input type="text" value="12"/>	<input type="text" value="0"/>	<input type="text" value="408"/>	<input type="text"/>	<input type="text"/>	<input type="text"/>	<input type="text"/>	<input type="text" value="n"/>	<input type="text" value="user"/>
2:	<input type="text"/>	<input type="text"/>	<input type="text"/>	<input type="text"/>	<input type="text"/>	<input type="text"/>	<input type="text"/>	<input type="text" value="n"/>	<input type="text" value="user"/>
3:	<input type="text"/>	<input type="text"/>	<input type="text"/>	<input type="text"/>	<input type="text"/>	<input type="text"/>	<input type="text"/>	<input type="text" value="n"/>	<input type="text" value="user"/>
4:	<input type="text"/>	<input type="text"/>	<input type="text"/>	<input type="text"/>	<input type="text"/>	<input type="text"/>	<input type="text"/>	<input type="text" value="n"/>	<input type="text" value="user"/>
5:	<input type="text"/>	<input type="text"/>	<input type="text"/>	<input type="text"/>	<input type="text"/>	<input type="text"/>	<input type="text"/>	<input type="text" value="n"/>	<input type="text" value="user"/>
6:	<input type="text"/>	<input type="text"/>	<input type="text"/>	<input type="text"/>	<input type="text"/>	<input type="text"/>	<input type="text"/>	<input type="text" value="n"/>	<input type="text" value="user"/>

	BCC	VALUE	TSC	CA-TSC	ITC	BCIE	Service/Feature	BAND	No.	Numbering	LAR	
	0	1	2	3	4	W	Request		Dgts	Format		
1:	<input type="text" value="y"/>	<input type="text" value="y"/>	<input type="text" value="y"/>	<input type="text" value="y"/>	<input type="text" value="y"/>	<input type="text" value="n"/>	<input type="text" value="n"/>	<input type="text"/>	<input type="text" value="rest"/>	<input type="text"/>	<input type="text" value="nat1-pub"/>	<input type="text" value="none"/>
2:	<input type="text" value="y"/>	<input type="text" value="y"/>	<input type="text" value="y"/>	<input type="text" value="y"/>	<input type="text" value="y"/>	<input type="text" value="n"/>	<input type="text" value="n"/>	<input type="text"/>	<input type="text" value="rest"/>	<input type="text"/>	<input type="text"/>	<input type="text" value="none"/>
3:	<input type="text" value="y"/>	<input type="text" value="y"/>	<input type="text" value="y"/>	<input type="text" value="y"/>	<input type="text" value="y"/>	<input type="text" value="n"/>	<input type="text" value="n"/>	<input type="text"/>	<input type="text" value="rest"/>	<input type="text"/>	<input type="text"/>	<input type="text" value="none"/>
4:	<input type="text" value="y"/>	<input type="text" value="y"/>	<input type="text" value="y"/>	<input type="text" value="y"/>	<input type="text" value="y"/>	<input type="text" value="n"/>	<input type="text" value="n"/>	<input type="text"/>	<input type="text" value="rest"/>	<input type="text"/>	<input type="text"/>	<input type="text" value="none"/>
5:	<input type="text" value="y"/>	<input type="text" value="y"/>	<input type="text" value="y"/>	<input type="text" value="y"/>	<input type="text" value="y"/>	<input type="text" value="n"/>	<input type="text" value="n"/>	<input type="text"/>	<input type="text" value="rest"/>	<input type="text"/>	<input type="text"/>	<input type="text" value="none"/>
6:	<input type="text" value="y"/>	<input type="text" value="y"/>	<input type="text" value="y"/>	<input type="text" value="y"/>	<input type="text" value="y"/>	<input type="text" value="n"/>	<input type="text" value="n"/>	<input type="text"/>	<input type="text" value="rest"/>	<input type="text"/>	<input type="text"/>	<input type="text" value="none"/>

Subaddress

Right-click in a field to see a list of valid entries or help text

Ready NUM



Configuring Cisco CallManager

6608-T1 Gateway Configuration

The screenshot shows the Cisco CallManager 4.0 Administration web interface in Microsoft Internet Explorer. The browser address bar shows the URL: `http://cm-klngon/CCMAdmin/gatewayconfig.asp?pkid={DF71136E-4975-4B2C-BDE6-C24A840B4ABC}&type=1`. The page title is "Gateway Configuration".

Product : Cisco Catalyst 6000 T1 VoIP Gateway
Gateway : S0/DS1-0@SDA0001C9D93A98
Device Protocol: Digital Access PRI
Registration: Registered with Cisco CallManager 172.20.32.254
IP Address: [172.20.32.112](#)

Status: Ready

Device Information

MAC Address*	<input type="text" value="0001C9D93A98"/>
Description	<input type="text" value="SDA0001C9D93A98"/>
Device Pool*	<input type="text" value="Default"/>
Network Locale	<input type="text" value="United States"/>
Media Resource Group List	<input type="text" value="< None >"/>
Location	<input type="text" value="< None >"/>
AAR Group	<input type="text" value="< None >"/>
Load Information	<input type="text" value=""/>

Multilevel Precedence and Preemption (MLPP) Information

MLPP Domain (e.g., "0000FF")	<input type="text" value=""/>
MLPP Indication	<input type="text" value="Off"/>
MLPP Preemption	<input type="text" value="Disabled"/>

Interface Information

PRI Protocol Type*	<input type="text" value="PRI NI2"/>
Protocol Side*	<input type="text" value="User"/>
Channel Selection Order*	<input type="text" value="Top Down"/>
Channel IE Type*	<input type="text" value="Timeslot Number"/>



Cisco CallManager 4.0 Administration - Gateway Configuration - Microsoft Internet Explorer

File Edit View Favorites Tools Help

Back Forward Stop Home Search Favorites Media Print

Address <http://cm-klngon/CCMAdmin/gatewayconfig.asp?pkid={DF71136E-4975-4B2C-BDE6-C24A840B4ABC}&type=1> Go Links

PCM Type*

Delay for first restart (1/8 sec ticks)

Delay between restarts (1/8 sec ticks)

Inhibit restarts at PRI initialization

Enable status poll

Call Routing Information

Inbound Calls

Significant Digits*

Calling Search Space

AAR Calling Search Space

Prefix DN

Outbound Calls

Calling Line ID Presentation*

Calling Party Selection*

Called party IE number type unknown*

Calling party IE number type unknown*

Called Numbering Plan*

Calling Numbering Plan*

Number of digits to strip*

Caller ID DN

SMDI Base Port*

PRI Protocol Type Specific Information

Display IE Delivery

Redirecting Number IE Delivery - Outbound

Redirecting Number IE Delivery - Inbound

Send Extra Leading Character In DisplayIE***

Setup non-ISDN Progress Indicator IE Enable****

Local intranet



Cisco CallManager 4.0 Administration - Gateway Configuration - Microsoft Internet Explorer

File Edit View Favorites Tools Help

Back Forward Stop Home Search Favorites Media

Address <http://cm-klngon/CCMAdmin/gatewayconfig.asp?pkid={DF71136E-4975-4B2C-BDE6-C24A840B4ABC}&type=1> Go Links »

MCDN Channel Number Extension Bit Set to Zero**

Send Calling Name In Facility IE

Interface Identifier Present**

Interface Identifier Value**

Connected Line ID Presentation (QSIG Inbound Call)*

Connected PBX Model

Product Specific Configuration

Clock Reference*

TX-Level CSU*

FDL Channel*

Framing*

Audio Signal Adjustment into IP Network*

Audio Signal Adjustment from IP Network*

Yellow Alarm*

Zero Suppression*

Digit On Duration(50-500ms)*

Interdigit Duration(50-500msec)*

SNMP Community String

Disable SNMP Set operations*

Debug Port Enable*

Hold Tone Silence Duration*

Port Used for Voice Calls*

Port Used for Modem Calls*

Port Used for Fax Calls*

Fax and Modem Parameters

Fax Relay Enable*

Fax Error Correction Mode Override*

Maximum Fax Rate*

Local intranet



Cisco CallManager 4.0 Administration - Gateway Configuration - Microsoft Internet Explorer

File Edit View Favorites Tools Help

Address <http://cm-kingon/CCMAdmin/gatewayconfig.asp?pkid={DF71136E-4975-4B2C-BDE6-C24A840B4ABC}&type=1> Go Links >>

Fax Payload Size*	<input type="text" value="20"/>
Non Standard Facilities Country Code*	<input type="text" value="65535"/>
Non Standard Facilities Vendor Code*	<input type="text" value="65535"/>
Fax/Modem Packet Redundancy*	<input type="checkbox"/>
NSE Type*	<input type="text" value="Non-IOS Gateways"/>

Playout Delay Parameters

Initial Playout Delay*	<input type="text" value="40"/>
Minimum Playout Delay*	<input type="text" value="20"/>
Maximum Playout Delay*	<input type="text" value="150"/>

Echo Canceller Configuration

Echo TailLength (ms)*	<input type="text" value="32 ms"/>
Minimum ERL (db)*	<input type="text" value="6 db"/>

* indicates required item
** applicable to DMS-100 protocol only
*** applicable to DMS-100 protocol and DMS-250 protocol only
**** may be required to force ringback from some PBXs

[Back to Find/List Gateways](#)

Local intranet



Enbloc Route Pattern Configuration

Cisco CallManager 4.0 Administration - Route Pattern/Hunt Pilot Configuration - Microsoft Internet Explorer

File Edit View Favorites Tools Help

Back Forward Stop Home Search Favorites Media Print

Address http://cm-klngon/CCMAdmin/routepatternconfig.asp?pkid={C26A5255-B1A4-403E-A274-612D32EE2E60} Go Links

Route Pattern/Hunt Pilot: 2XXX

Status: Ready
Note: Any update to this Route Pattern or Hunt Pilot automatically resets the associated gateway or Route/Hunt List

Copy Update Delete

Pattern Definition

Route Pattern/Hunt Pilot* 2XXX

Partition <None>

Description

Numbering Plan* North American Numbering Plan

Route Filter <None>

MLPP Precedence Default

Gateway or Route/Hunt List* S0/DS1-0@SDA0001C9D93A98 (Edit)

Route Option

Route this pattern

Block this pattern -- Not Selected --

Provide Outside Dial Tone Allow Overlap Sending Urgent Priority

Calling Party Transformations

Use Calling Party's External Phone Number Mask

Calling Party Transform Mask

Prefix Digits (Outgoing Calls)

Calling Line ID Presentation Default

Calling Name Presentation Default

Connected Party Transformations

Connected Line ID Presentation Default

Connected Name Presentation Default

Called Party Transformations

Discard Digits <None>

Called Party Transform Mask

Prefix Digits (Outgoing Calls)

ISDN Network-Specific Facilities Information Element

Carrier Identification Code

Network Service Protocol -- Not Selected --

Network Service	Service Parameter Name	Service Parameter Value
-- Not Selected --	< Not Exist >	

Done Local intranet



Overlap Sending Route Pattern Configuration

Cisco CallManager 4.0 Administration - Route Pattern/Hunt Pilot Configuration - Microsoft Internet Explorer

File Edit View Favorites Tools Help

Back Forward Stop Home Search Favorites Media Print

Address http://cm-klngon/CCMAdmin/routepatternconfig.asp?pkid={E959BFF6-5645-4444-9E24-2768AFCAAD03} Go Links

Route Pattern/Hunt Pilot: 9.X

Status: Ready
Note: Any update to this Route Pattern or Hunt Pilot automatically resets the associated gateway or Route/Hunt List

Copy Update Delete

Pattern Definition

Route Pattern/Hunt Pilot*	9.X
Partition	< None >
Description	
Numbering Plan*	North American Numbering Plan
Route Filter	< None >
MLPP Precedence	Default
Gateway or Route/Hunt List*	S0/DS1-0@SDA0001C9D93A98 (Edit)
Route Option	<input checked="" type="radio"/> Route this pattern <input type="radio"/> Block this pattern — Not Selected —

Provide Outside Dial Tone Allow Overlap Sending Urgent Priority

Calling Party Transformations

Use Calling Party's External Phone Number Mask

Calling Party Transform Mask	
Prefix Digits (Outgoing Calls)	
Calling Line ID Presentation	Default
Calling Name Presentation	Default

Connected Party Transformations

Connected Line ID Presentation	Default
Connected Name Presentation	Default

Called Party Transformations

Discard Digits	PreDot
Called Party Transform Mask	
Prefix Digits (Outgoing Calls)	

ISDN Network-Specific Facilities Information Element

Carrier Identification Code		
Network Service Protocol	— Not Selected —	
Network Service	Service Parameter Name	Service Parameter Value
— Not Selected —	< Not Exist >	

Done Local intranet



PSTN Route Pattern Configuration

Cisco CallManager 4.0 Administration - Route Pattern/Hunt Pilot Configuration - Microsoft Internet Explorer

Address: http://cm-kingon/CCMAdmin/routepatternconfig.asp?pkid={A0E58AC2-80ED-4857-9D43-DCC43AA6EA56}

Route Pattern/Hunt Pilot: 91650XXXXXX

Status: Ready
Note: Any update to this Route Pattern or Hunt Pilot automatically resets the associated gateway or Route/Hunt List

Copy Update Delete

Pattern Definition

Route Pattern/Hunt Pilot*	91650XXXXXX	
Partition	< None >	
Description		
Numbering Plan*	North American Numbering Plan	
Route Filter	< None >	
MLPP Precedence	Default	
Gateway or Route/Hunt List*	S0/DS1-0@SDA0001C9D93A98 (Edit)	
Route Option	<input checked="" type="radio"/> Route this pattern <input type="radio"/> Block this pattern [- Not Selected -]	
<input checked="" type="checkbox"/> Provide Outside Dial Tone	<input type="checkbox"/> Allow Overlap Sending	<input type="checkbox"/> Urgent Priority

Calling Party Transformations

Use Calling Party's External Phone Number Mask

Calling Party Transform Mask	
Prefix Digits (Outgoing Calls)	408527
Calling Line ID Presentation	Default
Calling Name Presentation	Default

Connected Party Transformations

Connected Line ID Presentation	Default
Connected Name Presentation	Default

Called Party Transformations

Discard Digits	< None >
Called Party Transform Mask	
Prefix Digits (Outgoing Calls)	

ISDN Network-Specific Facilities Information Element

Carrier Identification Code					
Network Service Protocol	[- Not Selected -]				
Network Service	[- Not Selected -]	Service Parameter Name	[< Not Exist >]	Service Parameter Value	

Done Local intranet



7960 IP phone Configuration

Cisco CallManager 4.0 Administration - Phone Configuration - Microsoft Internet Explorer

File Edit View Favorites Tools Help

Address <http://cm-kingon/CCMAdmin/phoneconfig.asp?pkid={23EE0A35-0B85-42D6-8B13-18D674D3F2CE}>

Phone Configuration

[Add a new phone](#)
[Add/Update Speed Dials](#)
[Subscribe/Unsubscribe Services](#)
[Dependency Records](#)
[Back to Find/List Phones](#)

Directory Numbers

Base Phone

- Line 1 - 4000 in Phones
- Line 2 - Add new DN

Phone: SEP000B5FD22FE8 (Auto 4000)
Registration: Registered with Cisco CallManager 172.20.32.254
IP Address: [172.20.32.102](#)
Status: Ready

Phone Configuration (Model = Cisco 7960)

Device Information

MAC Address*	<input type="text" value="000B5FD22FE8"/>
Description	<input type="text" value="Auto 4000"/>
Owner User ID	<input type="text"/> (Select User ID)
Device Pool*	<input type="text" value="Default"/> (View details)
Calling Search Space	<input type="text" value="< None >"/>
AAR Calling Search Space	<input type="text" value="< None >"/>
Media Resource Group List	<input type="text" value="< None >"/>
User Hold Audio Source	<input type="text" value="< None >"/>
Network Hold Audio Source	<input type="text" value="< None >"/>
Location	<input type="text" value="< None >"/>
User Locale	<input type="text" value="< None >"/>
Network Locale	<input type="text" value="< None >"/>
Device Security Mode	<input type="text" value="Use System Default"/>
Built In Bridge	<input type="text" value="Default"/>
Privacy	<input type="text" value="Default"/>

Phone Button Template Information

Phone Button Template*	<input type="text" value="Standard 7960"/> (View button list)
------------------------	---

Softkey Template Information

Softkey Template	<input type="text" value="< None >"/>
------------------	---

Expansion Module Information

Module 1	<input type="text" value="< None >"/>
Module 2	<input type="text" value="< None >"/>

Local intranet



Cisco CallManager 4.0 Administration - Phone Configuration - Microsoft Internet Explorer

File Edit View Favorites Tools Help

Back Forward Stop Home Search Favorites Media Print

Address http://cm-klington/CCMAdmin/phoneconfig.asp?pkid={23EE0A35-0B85-42D6-8B13-18D674D3F2CE} Go Links >>

Firmware Load Information (leave blank to use default)

Phone Load Name

Module 1 Load Name (Module 1 selection required)

Module 2 Load Name (Module 2 selection required)

Cisco IP Phone - External Data Locations (leave blank to use default)

Information

Directory

Messages

Services

Authentication Server

Proxy Server

Idle

Idle Timer (seconds)

Extension Mobility (Device Profile) Information

Enable Extension Mobility Feature

Log Out Profile

Log In User ID

Log In Time

Log Out Time

Multilevel Precedence and Preemption (MLPP) Information

MLPP Domain (e.g., "0000FF")

MLPP Indication

MLPP Preemption

Product Specific Configuration

Disable Speakerphone

Disable Speakerphone and Headset

Forwarding Delay*

PC Port*

Settings Access*

Gratuitous ARP*

PC Voice VLAN Access*

Local intranet



Cisco CallManager 4.0 Administration - Directory Number Configuration - Microsoft Internet Explorer

File Edit View Favorites Tools Help

Address http://cm-klington/CCMAdmin/directorynumber.asp?NumPlanMapID={FDF4C8AE-583C-4480-9C58-36FC82BAA685}

Directory Number Configuration

[Configure Device \(SEP000B5FD22FE8\)](#)
[Dependency Records](#)

Associated With
SEP000B5FD22FE8
7960 (Line 1)

Directory Number: 4000 (Phones)
Status: Ready
Note: Any update to this Directory Number automatically resets the associated devices

Update Remove from Device Reset Devices

Directory Number

Directory Number* 4000
Partition Phones

Directory Number Settings

Voice Mail Profile <None>
(Choose <None> to use default)

Calling Search Space Phones

AAR Group <None>

User Hold Audio Source <None>

Network Hold Audio Source <None>

Auto Answer Auto Answer Off

Call Forward and Pickup Settings

	Voice Mail Destination	Calling Search Space
Forward All	<input type="checkbox"/>	<None>
Forward Busy	<input type="checkbox"/>	<None>
Forward No Answer	<input type="checkbox"/>	<None>
No Answer Ring Duration		(seconds)
Call Pickup Group	<None>	

MLPP Alternate Party Settings

Target (Destination)

Calling Search Space <None>

No Answer Ring Duration (seconds)

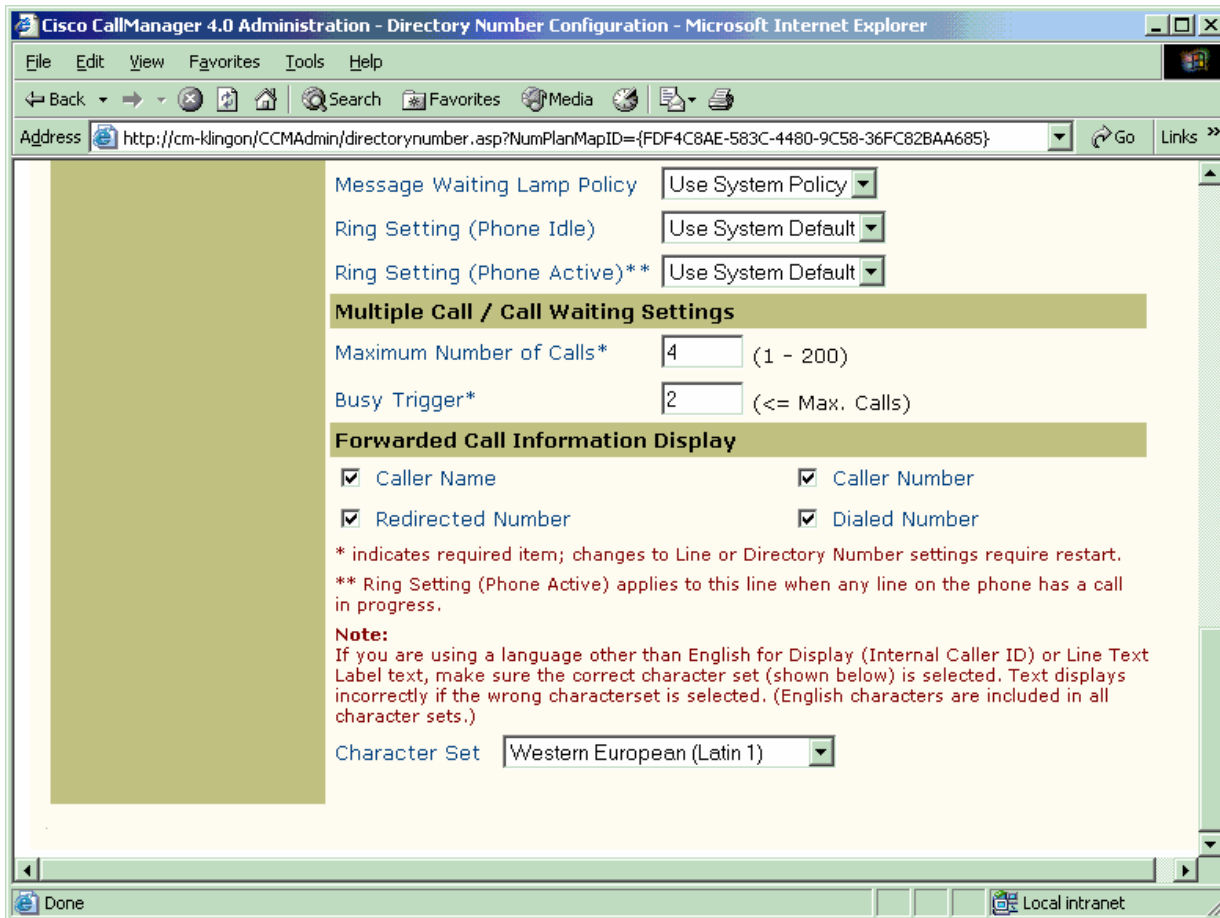
Line Settings for this Device

Display (Internal Caller ID) JOHN DOE

Line Text Label

External Phone Number Mask

Done Local intranet



Important Information

THE SPECIFICATIONS AND INFORMATION REGARDING THE PRODUCTS IN THIS MANUAL ARE SUBJECT TO CHANGE WITHOUT NOTICE. ALL STATEMENTS, INFORMATION, AND RECOMMENDATIONS IN THIS MANUAL ARE BELIEVED TO BE ACCURATE BUT ARE PRESENTED WITHOUT WARRANTY OF ANY KIND, EXPRESS OR IMPLIED. USERS MUST TAKE FULL RESPONSIBILITY FOR THEIR APPLICATION OF ANY PRODUCTS.

IN NO EVENT SHALL CISCO OR ITS SUPPLIERS BE LIABLE FOR ANY INDIRECT, SPECIAL, CONSEQUENTIAL, OR INCIDENTAL DAMAGES, INCLUDING, WITHOUT LIMITATION, LOST PROFITS OR LOSS OR DAMAGE TO DATA ARISING OUT OF THE USE OR INABILITY TO USE THIS MANUAL, EVEN IF CISCO OR ITS SUPPLIERS HAVE BEEN ADVISED OF THE POSSIBILITY OF SUCH DAMAGES.



Corporate Headquarters

Cisco Systems, Inc.
170 West Tasman Drive
San Jose, CA 95134-1706
USA
www.cisco.com
Tel: 408 526-4000
800 553-NETS (6387)
Fax: 408 526-4100

European Headquarters

Cisco Systems International
BV
Haarlerbergpark
Haarlerbergweg 13-19
1101 CH Amsterdam
The Netherlands
www-europe.cisco.com
Tel: 31 0 20 357 1000
Fax: 31 0 20 357 1100

Americas Headquarters

Cisco Systems, Inc.
170 West Tasman Drive
San Jose, CA 95134-1706
USA
www.cisco.com
Tel: 408 526-7660
Fax: 408 527-0883

Asia Pacific Headquarters

Cisco Systems, Inc.
Capital Tower
168 Robinson Road
#22-01 to #29-01
Singapore 068912
www.cisco.com
Tel: +65 317 7777
Fax: +65 317 7799

Cisco Systems has more than 200 offices in the following countries and regions. Addresses, phone numbers, and fax numbers are listed on **the Cisco Web site at www.cisco.com/go/offices.**

Argentina • Australia • Austria • Belgium • Brazil • Bulgaria • Canada • Chile • China PRC • Colombia • Costa Rica • Croatia • Czech Republic • Denmark • Dubai, UAE • Finland • France • Germany • Greece • Hong Kong SAR • Hungary • India • Indonesia • Ireland • Israel • Italy • Japan • Korea • Luxembourg • Malaysia • Mexico • The Netherlands • New Zealand • Norway • Peru • Philippines • Poland • Portugal • Puerto Rico • Romania • Russia • Saudi Arabia • Scotland • Singapore • Slovakia • Slovenia • South Africa • Spain • Sweden • Switzerland • Taiwan • Thailand • Turkey • Ukraine • United Kingdom • United States • Venezuela • Vietnam • Zimbabwe

Copyright 2003 Cisco Systems, Inc. All rights reserved. Cisco, Cisco Systems, and the Cisco Systems logo are registered trademarks or trademarks of Cisco Systems, Inc. and/or its affiliates in the U.S. and certain other countries. All other trademarks mentioned in this document or Web site are the property of their respective owners. The use of the word partner does not imply a partnership relationship between Cisco and any other company. (0301R)