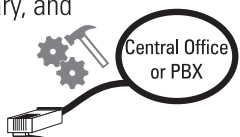


Quick Reference

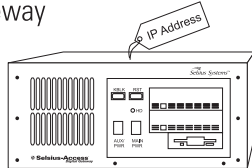
CISCO ACCESS DIGITAL GATEWAY DT-24 OR DE-30

Quick Connect

...span, if necessary, and ...t.



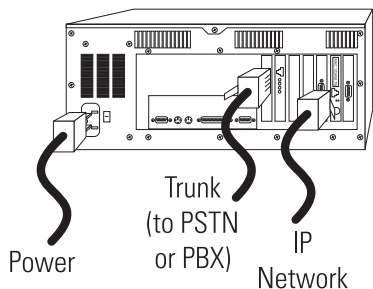
Digital Gateway's software and IP address to the Gateway (calling the Digital Gateway Software").



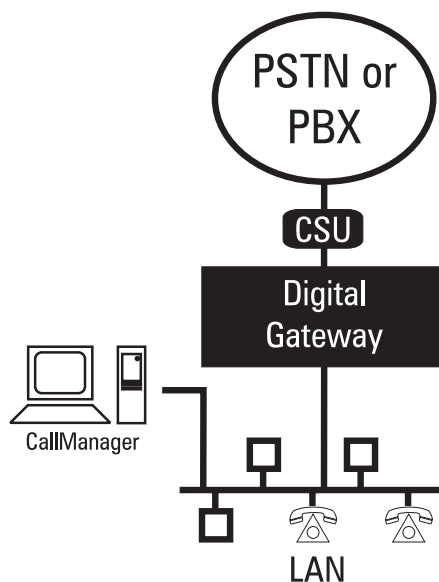
...the Gateway in CallManager ...tion.



...e power, trunk, and Ethernet cables.



Topology



Note: A CSU is required if you are connecting to the PSTN or if the Gateway is more than 30 meters from a PBX.

Getting Help

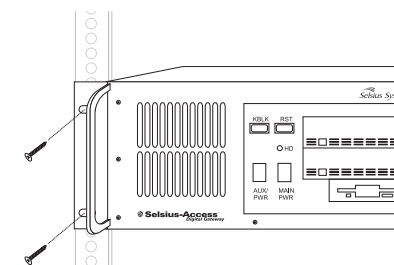
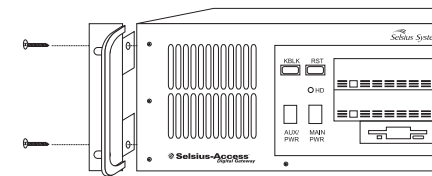
For detailed installation and configuration instructions, visit our Web site and view the online System Guide at:

<http://www.cisco.com/documentation/ccn/v23/index.htm>

Documentation is also included on the Cisco Communications Network CD. Insert the CD and click System Guide to open the CD-ROM version of the Selsius System Guide.

Mounting

You can attach the included handles to the Gateway onto a 19-inch rack.



Cabling

The Digital Gateway requires EIA/TIA 568-A Cat 3 trunks and Category 3 (or higher) cabling for 100 Mbps. Both cables require standard RJ-45 connectors. The connectors are not supplied.

The Digital Gateway's Software

For DT-24/DE-30 involves copying necessary files from the CallManager PC and transferring them to the gateway.

DT-24/DE-30 software:

For Windows 95, insert a floppy disk with the software files. For example, insert a floppy disk and type `format /s a:` at the command prompt.

Follow the following procedures:

For Windows 95 in Step 1: on the CallManager PC, copy the files from the folder `c:\program files\digitalaccess\makehd\disk1` to the floppy disk.

For Windows 95 in Step 1: on the CallManager PC, copy the files from the folder `c:\program files\digitalaccess\makehd\win95` to the floppy disk.

For Windows 98 in Step 1: on the CallManager PC, copy the files from the folder `c:\program files\digitalaccess\makehd\win98` to the floppy disk.

After you used in Step 1, copy the file "format.com" to the floppy disk. Do this only after you have completed Step 2.

On the floppy disk, edit the autoexec.bat file using Figure 1 as an example. First, edit the subnet mask. Then, edit the IP address for the DT-24/DE-30, the subnet's default gateway, and the DNS server. Use 0.0.0.0 if an address is not available.

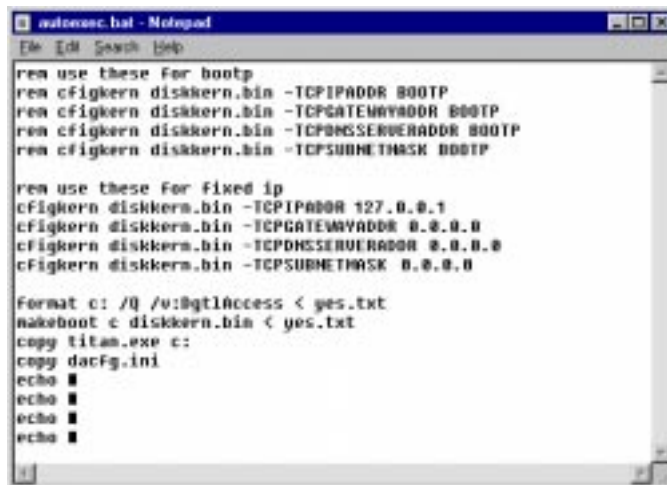


Figure 1

Step 5 On the floppy disk, edit the TFTP server's IP address in the file dacfg.ini using Figure 2 as an example.



Figure 2

Step 6 Insert the disk into the floppy drive of the DT-24/DE-30 and power on the gateway. The gateway's hard drive is reformatted. This can take up to 5 minutes. A long beep signals when the process is complete. **Do not continue until disk activity is complete.**

Step 7 Remove the floppy and reboot the DT-24/DE-30.

Notice

This device cannot be connected to the public switched telephone network (PSTN) in North America.

Network Connection

Cisco Digital Access requires a separately registered NT1 device for connection to the PSTN.

FCC Compliance Information

The Cisco Digital Access is in full compliance with Part 68 of the Federal Communications Commission (FCC) rules and regulations. Cisco Digital Access complies with FCC Part 15, Subpart B, of the FCC rules. In all matters regarding FCC registration and requirements of Appendix A of the FCC Part 68 Guide concerning Part 68 of the rules, the label information below is to be used for identification of the equipment and the information will be provided to the telephone company if requested.

- Service Code - 6.0P
- Equipment Code - XD
- Facility Interface Code - 04DU9-1SN

Further requirements are as follows:

- If the Cisco Digital Access causes harm to the telephone network, the telephone company may require the customer in advance that temporary discontinuance of service may be required. In practical, the telephone company will notify the customer as soon as possible and advise of the right to file a complaint with the FCC if it is believed to be necessary.
- The telephone company may make changes in its facilities, equipment, operations, or procedures that affect the operation of the equipment. If this happens, the telephone company may require in order for necessary modifications to be made to maintain uninterrupted service.
- If trouble is experienced with the Digital Access unit, please refer to Cisco's Limited Warranty for repair and/or warranty information. If the trouble is causing a significant interruption of service, the telephone company may request that the equipment be removed from the premises.
- Connection to Party Line Service is subject to state tariffs. (Contact the state public service commission, or corporate commission for information.)
- This equipment is capable of providing users access to interstate providers of long distance service. Use of access codes. Modifications of this equipment by call aggregators or resellers may constitute a violation of the Telephone Operator Consumers Act of 1990 and Part 68 of the FCC rules.

Industry Canada

Notice: The Industry Canada label identifies certified equipment. This certification indicates that the equipment meets certain telecommunications network protective, operational, and safety requirements. Users should refer to the appropriate Terminal Equipment Technical Requirements document(s) for more information. If the equipment will operate to the user's satisfaction.

Before installing this equipment, users should ensure that it is permissible to use the equipment in the local Telecommunications Company. The equipment must also be installed in accordance with the local connection. The customer should be aware that compliance with the above conditions is a condition of service in some situations.

Repairs to certified equipment should be coordinated by a representative of the telephone company. Repairs or alterations made by the user to this equipment, or equipment modifications made by the user, may void the warranty. Users should ensure for their own protection that the electrical ground connections to the equipment, to the telephone lines and internal metallic water pipe system, if present, are connected in accordance with the local code. This may be particularly important in rural areas.

Corporate Headquarters

Cisco Systems, Inc.
170 West Tasman Drive
San Jose, CA 95134-1706
USA
<http://www.cisco.com>

Copyright © 1999, Cisco Systems, Inc. All rights reserved. Cisco, Cisco IOS, Cisco Systems, and the Cisco logo are registered trademarks of Cisco Systems, Inc. in the U.S. and certain other countries. All other trademarks are the property of their respective owners.

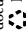
Printed in the USA on recycled paper containing 10% postconsumer waste.

pt to make such connections themselves, but should contact the appropriate
ectrician, as appropriate.

Corporate Headquarters
Cisco Systems, Inc.
170 West Tasman Drive
San Jose, CA 95134-1706
USA
<http://www.cisco.com>

Copyright © 1999, Cisco Systems, Inc. All rights reserved. Cisco, Cisco IOS, Cisco Syst
registered trademarks of Cisco Systems, Inc. in the U.S. and certain other countries. All
document are the property of their respective owners.
♻️ Printed in the USA on recycled paper containing 10% postconsumer waste.

Corporate Headquarters
Cisco Systems, Inc.
170 West Tasman Drive
San Jose, CA 95134-1706
USA
<http://www.cisco.com>

Copyright © 1999, Cisco Systems, Inc. All rights reserved. Cisco, Cisco IOS, Cisco Systems, Inc. are registered trademarks of Cisco Systems, Inc. in the U.S. and certain other countries. All other trademarks and registered trademarks are the property of their respective owners.
 Printed in the USA on recycled paper containing 10% postconsumer waste.